



Center for Civic Policy

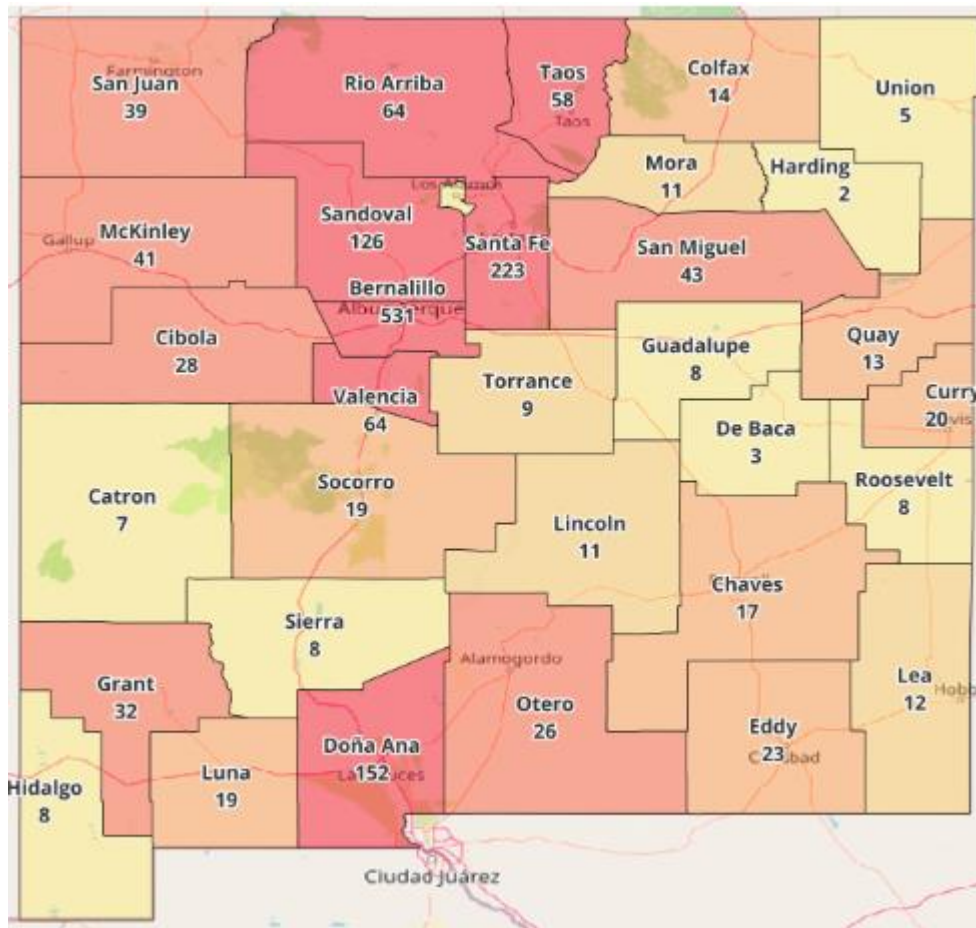
Climate Pollution Reduction Grants Community Engagement Online Survey Results

Overview:

1,664 Total Survey Respondents	1,229 Responded to the survey over the phone	The phone universe consisted of 164,000 New Mexico residents including both cell phone and landline numbers. 50,705 contacts were made from that list after multiple attempts to each number. Both English and Spanish language scripts were used.
	435 Responded to online survey	The online survey was developed to complement the phone survey and was deployed on January 25, 2024. Links to the online survey were transmitted through email list-servs, social media, flyers, and at public meetings. The survey was offered in English and Spanish.

Respondent Demographics

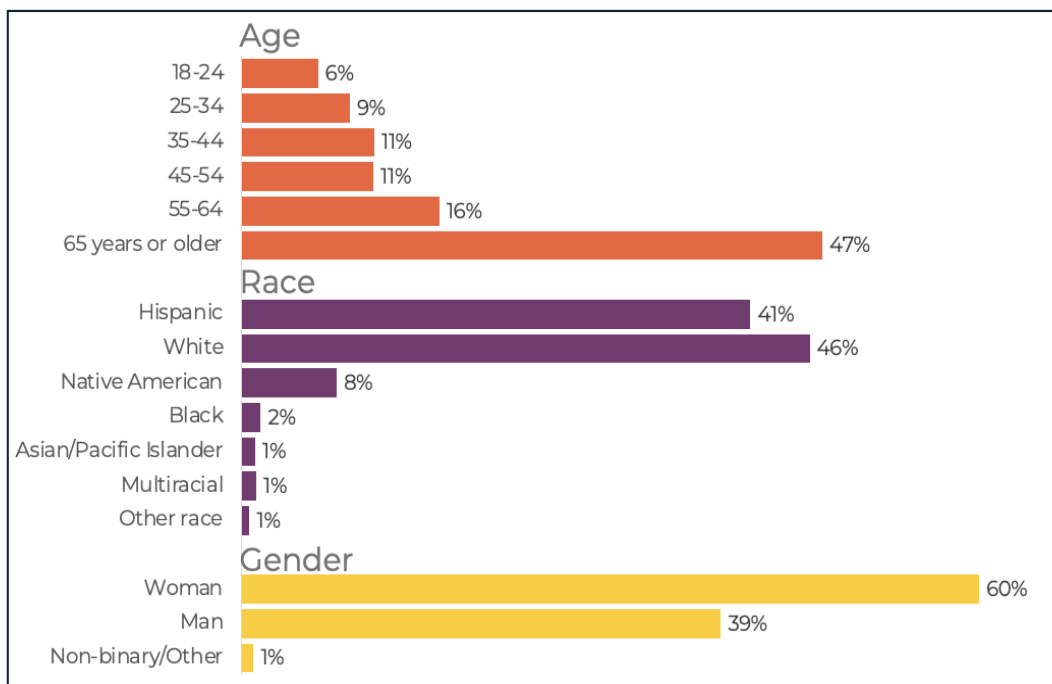
Respondents by County



Bernalillo	32%	Cibola	2%	Lincoln	1%
Santa Fe	14%	Otero	2%	Torrance	1%
Dona Ana	9%	Eddy	1%	Sierra	0%
Sandoval	8%	Curry	1%	Hidalgo	0%
Rio Arriba	4%	Socorro	1%	Roosevelt	0%
Valencia	4%	Luna	1%	Guadalupe	0%
Taos	4%	Chaves	1%	Catron	0%
San Miguel	3%	Colfax	1%	Union	0%
McKinley	2%	Quay	1%	De Baca	0%
San Juan	2%	Lea	1%	Harding	0%
Grant	2%	Mora	1%	Los Alamos	0%

The sample includes respondents from every county in New Mexico. Almost a third of respondents come from Bernalillo County which is roughly the same proportion of New Mexico residents that live in Bernalillo County. Residents of Santa Fe County are significantly overrepresented among respondents compared to the population of New Mexico and Taos, Rio Arriba, and San Miguel residents are slightly over-represented. Residents of San Juan County are underrepresented in the sample by about four percentage points compared to New Mexicans as a whole. Residents of other oil-rich counties - Lea, Chaves, and Eddy - are also slightly under-represented.

Respondents by Demographic Category

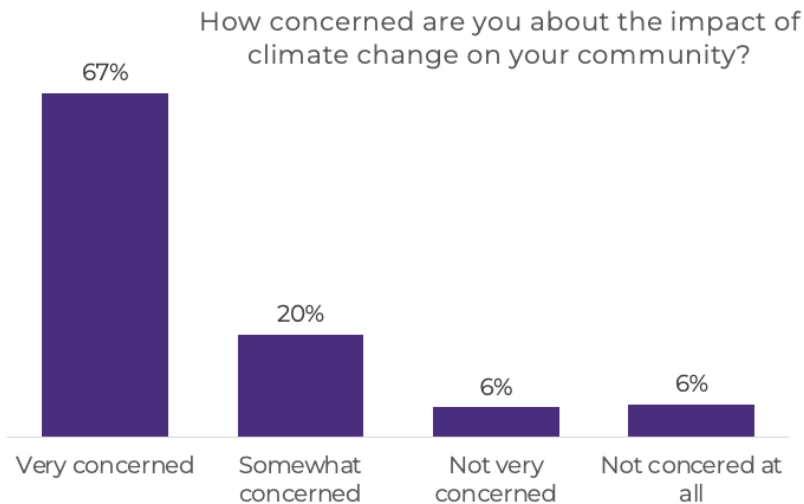


People who responded to this survey are older, more white, and more likely to be women than the general population of New Mexico. Individuals over 65 are significantly over-represented in this sample. Comprising about 19% of the total population of New Mexico, people over 65 make up 47% of respondents.

While over-representative of white respondents by about ten percentage points and under-representative of Hispanic respondents by around nine points, the percentage of Black and Asian/Pacific Islander respondents are within one percentage point of the proportion of these communities in New Mexico as a whole. Native Americans constitute 8% of survey respondents and 11% of the population of New Mexico.

Sixty percent of respondents are women compared to 50% of New Mexicans.

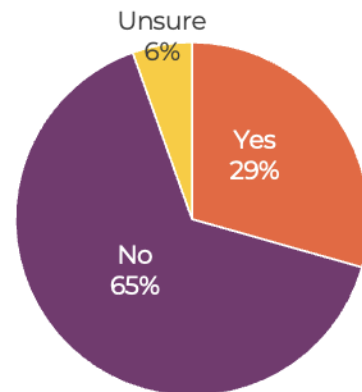
Respondents by Concern for Climate Change and Awareness of CPRG



Respondents were asked about their level of concern about the impact of climate change in their communities. More than two thirds of respondents reported that they were very concerned about the impact of climate change. Only 12% of respondents were not very concerned or not concerned at all.

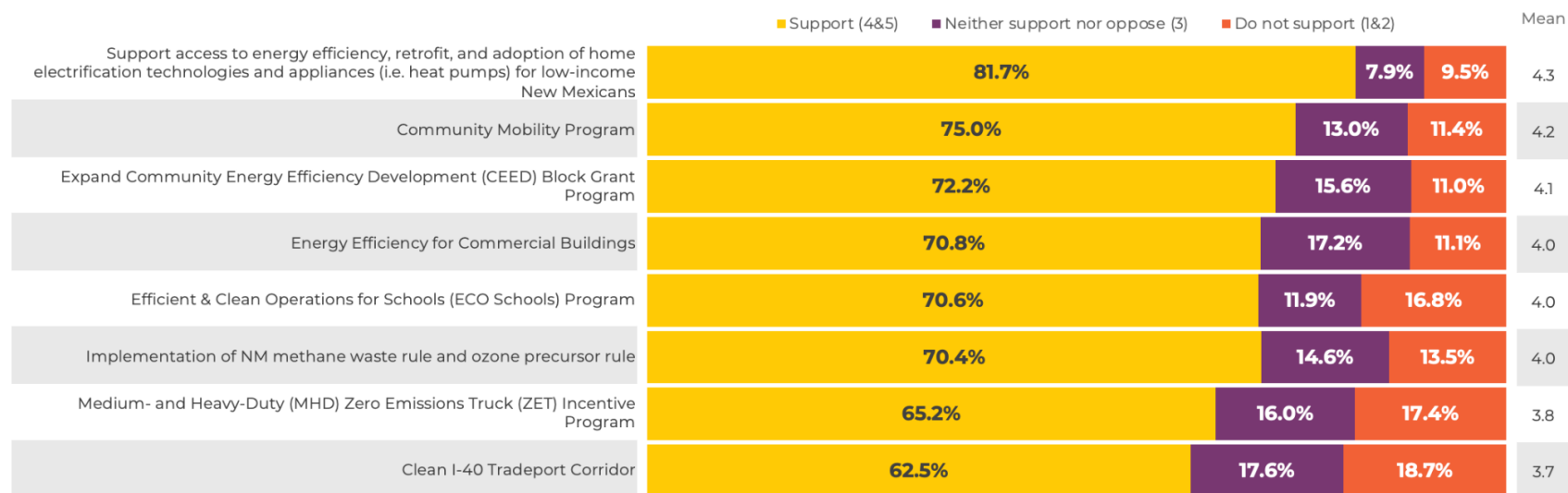
Respondents were also asked whether, before starting the survey, they were aware of the Climate Pollution Reduction Grant (CPRG) Program and the State of New Mexico's Climate Action Plan (CAP) under this program. About two thirds of respondents were not aware of CPRG or the state's CAP. Almost 30% of respondents were aware of this program and 6% were unsure.

Are you aware of the EPA's Climate Pollution Reduction Grant Program, and New Mexico's Climate Action Plan under this program?



Support for Proposed Measures

Respondents were provided with descriptions of the proposed CPRG measures and asked to rate their support on each measure using a five-point scale where 5 was strongly supportive and 1 was not supportive at all.



In general, a majority of respondents were supportive of each measure proposed by the state. Respondents were most likely to support providing low-income New Mexicans access to energy efficiency, retrofit, and home electrification technologies and appliances. Less than 10% of respondents did not support this measure. Three quarters of respondents supported community mobility programs and a similar percentage expressed support for expanding CEED grants. Energy efficiency for commercial buildings, efficient and clean operations for schools, and implementation of a methane waste rule received similar levels of support with about seven in ten respondents expressing support for these measures. A larger percentage of respondents opposed the efficient and clean operations for schools measure than these other measures. Fewer respondents were supportive of medium and heavy duty zero emission truck incentive programs and respondents expressed the lowest levels of support and highest proportion of opposition for the Clean I-40 transport corridor.

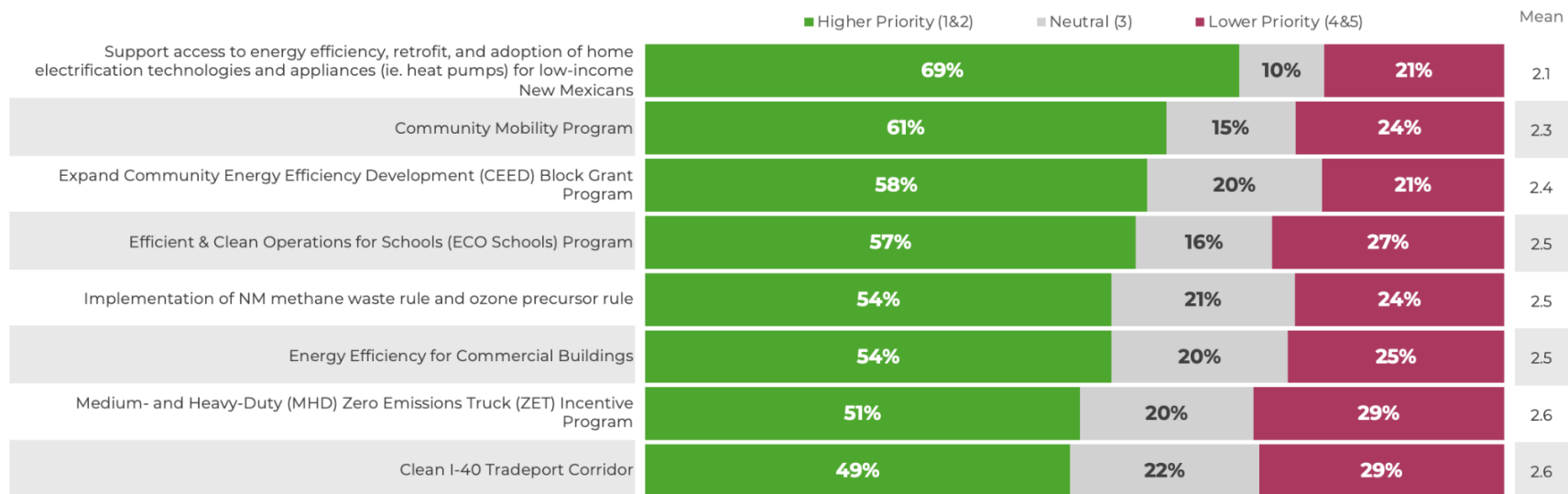
Taken together, these results suggest, perhaps not surprisingly, that people in New Mexico would prefer to see the State CPRG program focus on projects that directly affect communities - like retrofits for low-income folks - than things like commercial incentives for zero emissions trucks or hydrogen.

Measure		Populations most likely to support
	Support access to energy efficiency, retrofit, and adoption of home electrification technologies and appliances (ie. heat pumps) for low-income New Mexicans	<ul style="list-style-type: none"> • Non-binary respondents • White and Asian/Pacific Islander respondents • Respondents who took the survey online • Respondents from north central and urban counties
	Community Mobility Program	<ul style="list-style-type: none"> • Younger respondents • Women • White, Asian/Pacific Islander, and multiracial respondents • Respondents from urban counties
	Expand Community Energy Efficiency Development (CEED) Block Grant Program	<ul style="list-style-type: none"> • Respondents over 55 • Women • White, Asian/Pacific Islander, and multiracial respondents • Respondents who took the survey online • Respondents from counties in the north central part of the state
	Energy Efficiency for Commercial Buildings	<ul style="list-style-type: none"> • Respondents over 65 • White and multiracial respondents • Respondents who live in north central counties
	Efficient & Clean Operations for Schools (ECO Schools) Program	<ul style="list-style-type: none"> • Respondents under 25 and over 65 • Women • Black and Asian/Pacific Islander Respondents • Respondents who took the survey online • Respondents from urban counties
	Implementation of NM methane waste rule and ozone precursor rule	<ul style="list-style-type: none"> • Respondents over 65 • Women • White respondents • Respondents from counties in the north central part of the state

	<p>Medium- and Heavy-Duty (MHD) Zero Emissions Truck (ZET) Incentive Program</p>	<ul style="list-style-type: none"> • Respondents over 65 and 35-44 • White and Asian/Pacific Islander respondents • Women • Respondents who took the survey online • Respondents who live in north central and urban counties
	<p>Clean I-40 Tradeport Corridor</p>	<ul style="list-style-type: none"> • Older respondents • White and Black respondents • Respondents from north central counties • Respondents who took the survey by phone

Prioritization of Proposed Measures

Respondents who took the survey by phone were also asked, on a scale from 1 to 5 with 1 being the highest priority and 5 being the lowest priority, how they would want the state to prioritize each of the proposed measures.

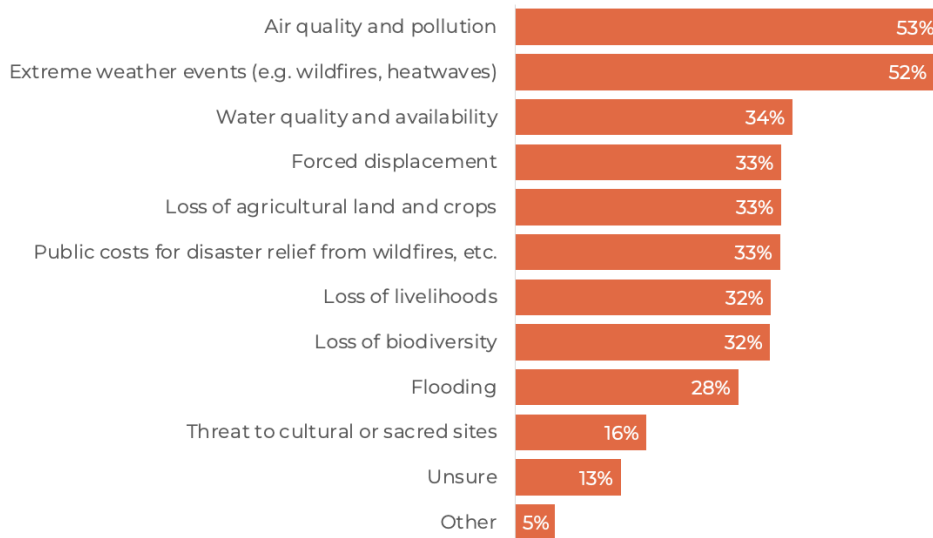


The results of this question are very similar to the results of the question about support for each measure, presented above. Respondents want to see the state prioritize the same measures they were more likely to be supportive of. By far, the largest proportion of respondents think the state should prioritize low-income New Mexican's access to energy efficiency and retrofit programs with only a fifth of respondents suggesting the state make this measure a low priority.

Here again, community mobility programs rated second highest for respondents. Zero emissions trucks programs and the Tradeport Corridor scored the lowest, with only about half of respondents reporting wanting to see the state prioritize those measures.

This is further evidence that New Mexicans are eager to see the state prioritize programs and measures that directly impact their communities through the CPRG program and the state's Climate Action Plan.

Biggest Challenges Affecting Communities



When asked about the specific environmental and social issues and challenges affecting their community the most due to climate change, more than half of respondents mentioned air quality and extreme weather events.

Similar proportions of respondents - about a third - indicated water quality and availability, forced displacement, loss of agricultural land and crops, public costs for disaster relief, lost

livelihoods, and the loss of biodiversity as their communities' biggest challenges.

Fewer respondents were concerned about flooding or threats to cultural or sacred sites. Only 13% of respondents reported they were unsure about the biggest challenges facing their communities from climate change. This is unsurprising given that the sample is overwhelmingly composed of people who are very concerned about climate change.

Younger respondents and Native American respondents were more likely to mention water quality and availability and threats to cultural or sacred sites than other respondents. Native American respondents were also more likely to mention loss of agricultural lands and crops and loss of biodiversity. Hispanic respondents were more likely to mention forced displacement than respondents from other racial groups. Older respondents were more likely to report concern about loss of livelihoods in their communities due to climate change.

Respondents from the north central region of the state reported higher levels of concern about extreme weather events, water quality and availability, public costs of disaster relief, and loss of biodiversity than respondents from other areas of the state.

Other Write-in Responses

Respondents were also given the opportunity to write in other challenges facing their communities. These responses included:

- Lip service to water conservation while we (NMOSE, NMAG) kow-tow to Pecan/Ag industry.
- Access to healthy/local food and outdoor equity
- Regulate the housing market. Housing is a basic need, not a means for the wealthy to become more wealthy
- Aftermath of Hermit's Peak/Calf Canyon fire - erosion, forest loss, wildlife loss
- Food waste going to landfill as well as plastic

- Urban Heat Island effect from black roofs, streets, parking lots absorbing sunlight, not reflecting it
- Emotional impact on our people, especially children whose suicide rates are increasing with climate threats and inadequate action by "adults"
- Access to safe, convenient transportation alternatives to car ownership
- Aedes Aegypti mosquitos and heat!
- This is a climate hoax. It is a plan by the elites and members of the World Economic Forum to limit our movements, take away our freedoms, and starve us. I am against all of these things. I am a born free American with unalienable rights. Learn the constitution and quit trying to impose these rules on us.
- Unavailability of health care and ignorance of health care providers re: effects of climate on health
- I see climate change contributing to all listed issues.
Other issues come after flooding, wildfires, etc.
- Impacts of increased temperatures on health, the homeless, lack of cooling centers
- Emotional effect on children of climate crisis that will likely worsen
- Damage to forest, prairie and open lands plus harm to wildlife
- Soil erosion due to flooding after fires
- Improved re-use & recycling programs; mitigation of heat effects on summer & fall home gardens; water vulnerability, due to failed efforts to clean up mining waste; food vulnerability; we in Grant Co. Depend too much on truck deliveries to SC food Coop & supermarkets; soil erosion
- Loss of pinon trees

Emotional impact on our people, especially children whose suicide rates are increasing with climate threats and inadequate action by "adults"

Access to safe, convenient transportation alternatives to car ownership

- Various health concerns
- Fire danger due to drought and climate change - National Forest surrounds our town.
- Negative impacts of cattle grazing on lands experiencing severe drought due to climate change
- Forest fire smoke from prescribed burns and wildfires
- Reliable and affordable energy
- Birds and other wildlife suffer due to lack of food because plants are suffering
- Espanola has cut down too many trees and paved too much creating a heat sink. It also makes the town ugly so nobody wants to visit. Too much soil and water pollution.
- The state should use the EPA money to create a fund local government can access for pollution reduction projects that create real economic and job opportunities for the most impacted communities
- The impact of climate change on the unhoused community, elders, and those with disabilities.
- Pollution reduction is very important to me
- Reliable and renewable energy
- Accessible, reliable and affordable energy
- Anxiety and depression
- The political climate that runs the county and city is oil and gas business owners who want only that kind of energy and employment to come back and think that there is no other way to make money.
- Reliable and affordable energy
- Affordable and reliable energy.
- Nuclear Weapons materials such as plutonium+uranium Extraction, Production and Transportation.
- None of the above
- Health problems
- Drought
- Corporate pressure on communities to buy into false solutions for climate.
- More \$ going into plutonium pit research and development for mass extinction is more than entire state budget. This money on nuke weapons needs to be diverted to climate change remediation.
- High summer temperatures
- Building code for homes does not allow composting toilets we want to use to conserve water
- Mental health effects of climate change
- Low income, Immigrant and homeless shelters

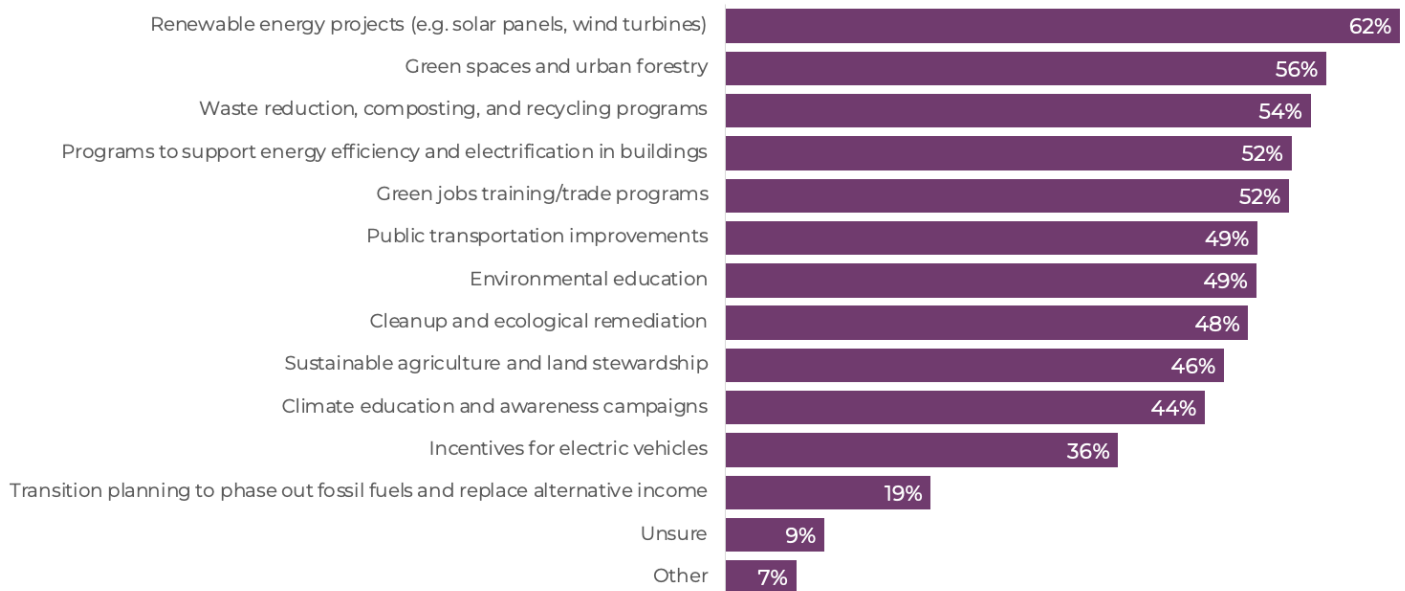
- Too much building near recycle water ways that displace wildlife and destroy the environment.
- Threat of forced changes, i.e. Losing gas vehicle, and not being low enough income for any help. House needs new windows, insulation, cooling, appliances but no money for that, interest rates too high.
- The transfer of power and wealth to oil and gas industry
- Tree canopy loss
- Impacts on people's sense of hope - and anxiety in children
- Failure of New Mexico Environment Department to enforce federal laws. They are in bed with business at the expense of the public.
- Pit production at LANL polluting our air and water and luring our youth into dangerous weapons work instead of supporting life affirming projects
- Polarization of society; disproportionate Climate impacts on low income-people; promotion of dangerous technologies like nuclear power.
- No emergency management plan in case of industrial/toxic/railroad emergency
- Climate migration
- Noise and air pollution from I-25 freeway and Sunport
- Drought
- Fight against fossil fuels and water intensive projects such as hydrogen, continued fracking exploration, big corporations locating to Los Lunas and taking water rights/aquifer depletion, lack of community planning with Pueblos and neighboring towns/villages
- Food deserts - lack of access to clean, healthy foods
- Mismanaged federal prescribed burns
- All of these may have manmade contributions including electromagnetic causes (which are not considered in moving toward the electrical based infrastructure). Also America is very clean and we have developed safe use of fossil fuels over the years. I am not supportive of going all electric, which has new environmental damage.
- Hot temperatures and lack of precipitation
- Political campaign finance
- Diminishing water sources
- Food Deserts
- Air quality
- Dust in the air
- Life quality
- Water is terrible, can't even make coffee with it, has a lot of lime in it
- High energy cost
- Would like to see schools transform to new HVAC other than electric & gas
- Changing climate
- Wild fires
- Food and shelter
- Climate change is hoax
- Costs are too expensive
- Cost propane and food
- Over population
- Using solar panels, future for grandchildren
- In his county, something that negatively affected water quality.
- Geo thermal to create power plants for electricity
- Irrigation.
- Air quality
- Wildfires caused by the government
- Increase electric vehicles, more green spaces, parks
- Shut the lab down
- Preserve acequias aggregation corridor in Northern New Mexico
- Homelessness
- Drouth wildfire

I see climate change contributing to all listed issues. Other issues come after flooding, wildfires, etc.

- Pollution from oil rigs. Potential disaster from nuclear storage facility
- Fix road
- Quality of life
- Housing
- Power plants the four corners
- Assistance for the upkeep of elderly peoples property
- Access to clean water
- More funding for energy efficiency for low income people and the elderly
- Lack of a way to get information in certain areas
- Use Natural Gas in support of decentralization of power distribution.
- Drought
- The streets and roads
- In the NW community gardens they are affected, they need aid.
- Temperature fluctuating and cost of food
- Oil and gas drilling
- 1. Electric Infrastructure 2. Loss of plants and animal species. 3. Less green in communities 4. Loss of nature leads to stress and social unrest
- Fracking, Recycling, transportation for seniors.
- Drought. Blame the governor
- Get harder on countries not implementing green technologies
- Costs of electricity
- Lack of water
- Windmills on the I40 corridor
- Threat to Native Americans. preservation of pueblos.
- Loss of biodiversity,
- Clean air. Less trees
- The aquifers that go most areas are being destroyed and are being kept under wrapped and if the government wants more tax money then need to make the aqua need stop clean
- Food prices gas prices energy prices
- Cleanup of trash, pollution
- The quality of the education of the children for all
- Advances in wind turbines for residential/commercial
- Over populated and losing their land and wildlife.
- Change the building codes to force contractors to comply.
- Lack of solar energy programs and moving towards electric vehicles
- Food prices
- Water quality
- Don't have enough roads for cars
- More jobs green jobs
- Utilities
- The fires supposed to control burn and also recycling and clean up
- Government is the problem not the solution
- Gun control raise age limit on guns & get rid of AR's
- Drought
- The amount of dust. Strong wind. To many plowing there fields. Stricter soil conservation
- Loss of water
- Assistance for low income people
- Governor does not care about people loosing their homes. No calls were answered or grant help offered from Michelle Lohan Grisham
- Price of energy
- Access to water
- Education statewide on these issues
- More Forestation, more water retention such as reservoirs to preserve waters
- Horrible heat

- Mountain range drilling and mining (sacred site)
- Quality of life in windy season, fear of house burning down
- The fact that we all use wood stoves
- Flash fires,
- Access to healthy food and housing and financing
- Especially Cultural and sacred sites
- Urgency about doing something about the environment
- Health problems
- Wild fires
- All except flooding
- Cars polluting
- Loss of woods
- Air quality
- Spraying the skies on a daily basis to block solar
- Lack of electricity access
- Roads to homes, they don't grade them. Roads are always a mess. Tried many times with the state.
- Taxes rising to pay for the changes
- Air quality
- Loss of life
- Recovery, remediation of native land due to climate change
- Air quality
- Expansion of subdivisions
- We need our coal power plants for backup
- Drought
- Schools family values
- Not enough local food production or support of local farmers
- Smog
- Water and roads are main issue
- Mine contamination
- High prices
- Fund housing
- Polluting
- Uranium Leakage In water, stray dog attacks of livestock and sometimes people
- Livestock, Food,
- Loss of water in aquifers
- Lack of support for low income
- Increase recycling
- Methane and oil field run off and trains.
- Air
- The droughts
- Heating and cooling costs
- Outskirts of NM not up to code heaters all around the home

Preferred Activities and Initiatives



When asked which of the following actions and initiatives would they like to see implemented in their community as part of the Climate Action Plan (CAP), the largest proportion of respondents indicated they would like to see renewable energy projects baked into the CAP. A majority of respondents also reported interest in green spaces and urban forestry; waste reduction, composting, and recycling programs; programs to support energy efficiency and electrification in buildings; and green jobs training/trade programs.

A little less than half of respondents want to see public transportation improvements, environmental education, and cleanup and ecological remediation in the state’s CAP. Respondents reported less interest in sustainable agriculture and land stewardship and climate education and awareness campaigns. Only a little more than a third of respondents want the state to include incentives for electric vehicles in their plan and fewer than 20% were interested in seeing a plan to transition away from fossil fuels in the CAP.

Younger respondents were more interested in seeing the state’s CAP include renewable energy projects, environmental education, cleanup and ecological remediation, climate education and awareness campaigns, and transition planning than older respondents. Native American respondents were more likely to mention waste reduction, composting, and recycling programs and environmental education than respondents from other racial groups as being important for the state’s CAP.

Respondents from the northwest part of the state were more interested in environmental education and climate education and awareness campaigns ending up in the CAP than folks from other parts of the state. Those living in north central counties were more likely to mention renewable energy projects, waste reduction and composting programs, cleanup and remediation, and transition planning.

Other Write-in Responses

Here too respondents were given the opportunity to write-in other things they would like to see included in the state's CAP. These responses included:

- Methane vent reductions on worst-offenders
- Reduce carbon by allowing work from home or remote work
- Watershed restoration
- Intermediate steps that enable use of clean fuels in current infrastructure
- Make communities walkable or bike able to reduce emissions and build community resiliency. Robust and very easily accessible public transportation like cable cars that don't use fossil fuels or false solutions like hydrogen
- Abandoning any and all hydrogen and carbon capture proposed technologies
- Public education is the key; there are too many climate-change deniers.
- Campaign - How to Stay Cool - all strategies needed for indoor and outdoor lifestyles
- Things that directly positively impact rural communities

Weatherization programs, climate disaster recovery efforts and rescue operations. Preparedness for future climate crisis effects. Tribal and indigenous led climate justice and just transition.

- Green Hydrogen for Cars, Trucks, Planes, Homes, etc...
- Reverse Urban Heat Islands by requiring white roofs, reflective paving, more trees
- High speed rail between Las Cruces and Albuquerque
- Water conservation and reduced use by industry
- Take active measures to protect our health from known threats - take public health actions to prepare in advance for the next fires, smoke, mosquito borne diseases traveling north with the warming climate, etc. HB104 please!
- We need to see smart communities that connect sustainability with climate resilience.
- Solarize everything! Decentralize electricity generation.
- None. See my response above. It applies to all these

draconian measures you are trying to impose on free people.

- Education among medical and public health practitioners regarding links between environmental degradation, climate change and human health
- Regulations that require building owners to clean up their act; public funds should not do what private profit can do
- Updating zoning and transportation to prioritize walkable cities and infill development with multi-family housing incentives and free housing rather than expanding out to suburbs and single family zoning.
- Community solar
- Reduction/Ban on all single-use plastic
- River and stream restoration , soul regeneration
- Emotional support for young people on climate crisis
- The State should use the EPA dollars to create a fund that local government should have access to for pollution reduction that have real economic and job opportunities for most impacted communities.
- Coordinated efforts to involve residents in promoting and implementing all of the above!
- Clean-up and ecological remediation of federal sites or private sites containing radioactive Matter both state controlled and federally controlled. Government sets the standard. Hazardous waste especially where water is located
- The State should use the EPA dollars to create a fund that local government should have access to for pollution reduction that have real economic and job opportunities for most impacted communities.
- Watershed restoration and green infrastructure projects that address water quality, water access, and riparian health
- Protection of public water resources
- Retrofitting (insulation, roofing) homes for low and moderate income NM's
- Real enforcement of laws to protect the environment
- Having places for composition to give back to the soil
- Bicycle transportation infrastructure

Real enforcement of laws to protect the environment

- Heat pumps for everyone! I'd also like to clean up main street so it is no longer a blighted area.
- Community-led Bioremediation and cleanup
- I want us to transition to a green economy by which will result in for pollution reduction and lead to real economic and job opportunities for our most impacted communities
- Public transit infrastructure, zero fares across the state
- That the people of the community not the republican politicians have the opportunity to engage in these projects. The politicians in SJ County turn up their noses at anything that would somehow change the ecological atmosphere of the county.

I want us to transition to a green economy by which will result in for pollution reduction and lead to real economic and job opportunities for our most impacted communities

- Quality jobs, paid apprenticeships and a strong pipeline for young NM workers
- Safe bike routes in all communities and between communities. For example, I live in Arroyo Seco, I would love a paved/well-marked bike route between Taos Ski Valley and Taos and Ranchos de Taos
- Policies to reduce plastic packaging in the food industry
- Weatherization programs, climate disaster recovery efforts and rescue operations. Preparedness for future climate crisis effects. Tribal and indigenous led climate Justice and just transition.

- Public health warnings, advisories, and alerts regarding climate related weather events; heat waves, hot nights, droughts
- I would like to see more reduction pollution projects centered on developing jobs & pathway
- Complete streets and improved accessibility without relying on a car
- Water security
- I do support renewable energy minus the hydrogen.
- Please see above. River waters, air & sky, highways at risk from nuke waste! New Mexico is a national sacrifice zone for nuke waste, uranium mining and nuke bomb production with nuke related waste materials going
- NOT hydrogen NOT
- Holding industrial agriculture (factory farms) accountable
- K-12 education about climate change
- Development of Hydrogen & Hydrogen economy.
- Neighborhood community solar mini-grid, on-site generation of electricity for ALL buildings
- Banning plastics use
- Community developed initiatives
- Health Impacts of toxic, hazardous, & carcinogenic
- Incentives to provide renewable energy to power electric vehicle charging sources.
- Grant money to turn old, energy sucking mobile homes into Adobe homes. Yes reuse, recycle and repurpose all parts and pieces.
- Rural areas are often forgotten/charging stations for electric vehicles
- State declaration of a climate crisis and adoption of policy actions to stop it
- Extensive Infrastructure (charging stations) for electric vehicles
- Stop the Los Alamos Plutonium Bomb Factory!!
- Groundwater education
- Better shoulders for bike traffic on High Road to Taos and other rural highways
- Agroecological land stewardship aka "regenerative farming" etc.
- Rejection of nuclear power as a climate "solution". Distributed (rooftop) solar and community solar and wind projects and energy-efficient buildings should be given top priority.
- In-person outreach to land grant residents about these questions
- Climate resiliency ... The ability for our communities to recover more quickly from disasters. We are currently STILL seriously struggling from the Calf Canyon/Hermit's Peak fire and flooding.
- Community solar and local choice energy
- Education
- Clean up of nuclear waste/abandoned uranium mines;
- Replacing flush toilets with composting toilets
- Stop selling our water to companies! We are in a 20+ year drought situation, selling water will kill us all!
- Eliminate objections to electrical grid

- Education that is not based on "sustainable dev" because that is not sound scientifically, rather uses models that are disputed regarding the dangers of methane and nitrogen.
- Climate action in concert with native communities and values
- Abolish government overreach
- Education of current situation
- Keep fossil fuels around
- Environmental for schools
- Don't pay for light bill
- Water cleaned up
- Improve water quality and availability
- Public Safety
- More solar panels
- More education on solar panels
- Education
- Charging Stations
- Bike lanes
- Eliminate poverty
- Lack of monies to fund all these programs
- I believe that we have other problems besides climate action change
- Get rid of forest services
- Better incentive for Homeowners installing Solar
- Concern about open pit mines environmental impact
- Programs for people to get off the streets
- Educating people to use less power
- Infrastructure for public transportation in rural areas
- Enforcing of water pollution standards
- Emphasized Solar Panels, more support from government increasing tax credits, not reducing them
- Education in high school and middle school
- Helping low income residents, state budget concerns
- Emission from smoke power plants
- Project in East Pecos NM in need of sewer system !
- Solar, and energy efficient heating and cooling for low income New Mexicans
- Education
- Water Availability
- Environmental cleanup
- Good ideas but wants to know how they will be funded
- Pollution
- More access to healthy food and access to community grown foods in low income neighborhoods. Reforesting urban environments. Supporting urban wildlife.
- Universal health care
- Water conservation and protection against forest fires
- State/ action against the city of Albuquerque in their attempt to abolish Bernalillo air quality board the, state needs to stop any future licensing LNG facilities
- Recycle
- Public transportation
- Bike infrastructure,
- Car pulling
- Incentive for farmers to grow crops
- Electric Vehicles if there is enough plugs and cheaper. Charging stations every where
- Codes favor contractors. Change codes to force contractors to build more energy efficient homes
- Improving for housing, build homes where people can afford to live to near they work
- Recycling is good
- Public Safety and Traffic Signage
- Problem with homeless

- Assistance for people who need to make homes more energy efficient
- Solar panels
- Educate while in the school system implementing cause and effect as nuclear as well as community integration such as field trips recycling trips etc., planting gardening, flowers etc..
- Help for low income families, better pay, help people to stay homes. More handicapped options. It is unconstitutional and wrong to take a persons property if they have Medicaid or Medicare.
- Solar energy no windmills
- More transportation for seniors. Better infrastructure for roads and water in Southern NM.
- Chem-trails reduction
- More education on climate change in rural areas.
- Small town, putting in roundabouts that should not be there.
- No electric vehicles
- Need to work together on this issue. Too much division.
- Junked vehicles everywhere. Environmentally not safe. Not the best water. No water in case there is a disaster.
- Recycling
- Increase fuel efficiency
- Indigenous people should lead as decision-makers on Sustainable agricultural programs
- Better resources
- Less carbon footprint on landfills
- Don't like electric
- Improve train transportation and stops, improve public dirt roads to paved so can ride bikes
- Public transportation
- Keep working on Quality Waters at Navajo Lake & San Juan River
- Housing
- Jobs in New Mexico not in fossil fuels such as renewable energy jobs./ Losing jobs due to losing fossil fuel jobs.
- Not fond of electric vehicles due to fires
- Less waste
- Pedestrian Safety and homelessness
- We need to do better and do better that has better transportation also schools are better
- Availability to more recycling centers
- Water and river
- Public transport on the community and renewal energy for homes
- Strong supporter of city limits

Other Ideas, Initiatives, and Organizations

Respondents were asked in an open-ended manner what ideas do they have or know of for innovative projects that could benefit from the Climate Pollution Reduction Grants and which existing local initiatives or organizations should be prioritized?

These are the responses:

- Investment in workforce development programs for gas/oil/coal workers. Prioritization of communities outside of major urban areas to build out renewable energy and charging infrastructure.
- Work more with tribal leaders in education the community on the effects of oil and gas production to the environment.

Investment in workforce development programs for gas/oil/coal workers. Prioritization of communities outside of major urban areas to build out renewable energy and charging infrastructure.

- PNM needs to allow residences to be totally green. They limit how much solar a residence can have so they can still charge for electricity. Many places in Santa Fe can generate more electricity than they need. The excess goes to the grid so it could be "given" to nearby facilities, to reduce costs (as needed).
- There should be a focus on those community orgs that work with immigrant, refugee, and asylum seekers. Especially those who are already having to migrate from places where extreme weather is impacted.
- Existing State of New Mexico STC (Solar Tax Credit) is insufficient to

cover the number of households installing solar panels. Late to apply results in a zero state STC. Solar companies are unable to provide needed information/documentation in a timely manner and oftentimes are unaware of the needed supporting documentation needed by the consumer to obtain a successful submission of the application for the STC.

- CDBG for home weatherization, air heat pumps. Clean transport corridor for I-10. NM needs a stronger long-lived rebate for EV. TOP PRIORITY is capping/capturing/ (marketing?) Methane vents in oil fields.
- Just transition in the NW and SE parts of the state
- Rural and under-served communities should be prioritized
- Keeping open spaces as they are without development seems important, building up existing residential areas instead of expanding
- The defunct ethanol plant in Tucumcari needs to be converted to a biogas plant and the 28MW diesel generator at the edge of town needs to be converted to run on biogas. Battery banks need to be installed and power the majority of Tucumcari with biogas. With the addition of solar and wind the city could become 100% renewable. With hydrogen and electric charging stations the economy of Tucumcari would grow because people will want to be a part of the future "renewable route 66" It would breath new life into a dying town.
- YUCCA, Earth Care
- "This project seeks to enable widespread reduction of harmful pollutants, greenhouse gas emissions (GHG), and negative environmental impacts, and is driven by advancing transportation equity and environmental justice for its surrounding, local communities. As part of its' diverse service portfolio, Prologis provides fleet electrification at warehouses and dedicated charging hubs, workplace charging, temporary and backup power, and hydrogen fueling stations. Prologis is also innovating to drastically limit peak electric utility demand charges by utilizing stored/alternative power supply on charging skids, as well as the integrated load management system of the chargers. As the leader in global logistics real estate, Prologis is empowering its' customers in their transition to a zero-emissions vehicle future, offering retrofit and build-to-suit vehicle charging and hydrogen and natural gas fueling projects across workplace, last-mile and heavy-duty applications. Having previously completed zero-emissions vehicle power infrastructure deployments throughout priority markets in California and Illinois, the Prologis team is qualified to successfully implement similar projects in New Mexico and beyond. These projects will improve air quality in priority areas and expand small business access to electric and alternatively fueled vehicles. Prologis has a net-zero 2040 emissions target, which aligns with the aggressive ESG goals of its customers, as well as State and Federal government mandates. As a pathway to net zero operations in the logistics and transportation sectors, Prologis is committed to decarbonizing its' operations as much as possible and to providing decarbonization solutions for its clients by investing in state-of-the-art infrastructure, expediting and simplifying project implementation, and

ensuring consistent, reliable and efficient fleet operations for the long haul. Transportation fuels are a large focal point of this solution. As an experienced project leader, Prologis has developed systems and solutions to address the most common issues related the installation and operation of alternative fueling/ charging infrastructure, including:

- Delayed utility grid upgrades and interconnection: Prologis anticipates grid interconnection timelines could span months to years. Prologis will deploy its ondemand Power solution by integrating low-emission, low-temperature, compression-based linear generators into an on-site power distribution system, cutting site energization down to weeks rather than months or years, and relieving pressure on electric utilities.
- Limited or stunted regional medium/heavy-duty (MHD) ZEV adoption: Prologis will design stations for maximum flexibility and modularity, using its innovative island design, enabling simple and cost-effective capacity expansion and contraction. There is pent-up demand for EV Charging and alternative fueling hubs across the country, which we hear from the logistical companies that operate out of Prologis-owned warehouses. Customers looking to replace traditionally fueled fleets with EV or alternative fuel replacements often lack the ability to invest in and develop their own on-site charging/fueling station at each location they operate out of, resulting in many EV/alternative fleets being tethered to a single location. To help address this problem, Prologis is working to develop a network of charging and alternative fueling hubs across the US which can be used by multiple fleets as well as the general public. The Prologis hub network will remove range limitations from EV and alternative fuel fleets in New Mexico, giving fleet operators the ability to confidently refuel at any of Prologis' hub locations. Operators will no longer be faced with a choice of investing first in new Zero Emissions (ZE) fleets or charging / fueling infrastructure, a problem that significantly challenges the speedy transition to zero emission goods movement. The transition from diesel fuels to zero-carbon fuels will significantly reduce GHG emissions and criteria air pollutants such as nox and diesel PM. Subsequently, this reduction in emissions is likely to contribute to improved health outcomes in the area by reducing toxic pollution that is linked to conditions such as bronchitis, asthma, and heart attacks.

List all partners Prologis brings together world-leading project partners, including leading goods movement fleets, to enable the successful transition for fleets into zero-emission vehicles (zevs). This hub infrastructure will provide direct and meaningful benefits to surrounding disadvantaged and low-income communities (dacs and lics) by enabling an increase in regional ZEV adoption and use, significantly reducing GHG emissions and criteria air pollutants. The communities in which these environmental and health benefits will be borne are among the most pollution-affected and vulnerable in New Mexico. These proposed projects will also provide local community workforce development and labor benefits, through the planning, construction, and maintenance phases of the hub installations; as well as training on the safety of hydrogen, ZE charging and the fundamental skills to join the transportation workforce. In many markets, Prologis also partners with community-based job placement organizations to support those in disadvantaged communities in transitioning to freight jobs. "

- I personally work on ecological restoration of degraded rangelands and bison restoration to public lands because as an ecologist I am aware that carbon sequestration potential of grasslands when grazed by native herbivores is our most viable hope for carbon drawdown, restoring habitats and biodiversity, banking water, and ensuring future food security.
- I think that building solar panels and we could plant crops for agriculture under those solar panels , benefiting their plants and using renewable resources.
- New gadgets for global warming
- I have two ideas that can help. One is using water, but at a limited amount for people to use. Because during the summer, where I live, we sometimes encounter a water drought, and it can happen when rain doesn't pour down, which can also lead to lakes, or watersheds to lose water. Another one would be the help of protecting the forest. All of the carbon goes into the forest, which is bad for the animals and living species. Also that many diseases can come from the forest, and we don't want something bad and can impact how many people./// I believe my local tribe in Zuni pueblo, are discussing this problems, and to find solutions to all the problems.

Housing and shelter for low-income individuals can be electrified and solarized to eliminate utility bills in a sector that is (a) largely publicly funded and (b) chronically underfunded. The housing and homelessness sector, which is constantly responding to crises, could greatly benefit from the investment in their buildings and the redirection of critical resources to their life-saving and very challenging work. As a former Executive Director of a housing/homelessness nonprofit that electrified and solarized our facilities, I know the benefits of this investment firsthand.

- I'm not sure I'm just learning
- Solar power technology deployment.
- Hydrogen is not a solution. Let's not keep focusing on extractive industries and fossil fuels. We need more investment in accessible and affordable (ideally free) public transit and AMAZING biking/walking/mobility for people with disabilities especially in low income communities and communities of color.
- I would love to see more public-private partnerships and policy/PR actions that drive the private sector to become climate resilient. For example, 1) adopting a state purchasing policy that gives bid preference to Benefit Corps and Certified B Corps, 2) Publicly stating that responsible business practices are good for our state, and the certifications the state looks for include Benefit Corporation and Certified B Corp status.
- Hydro aquaponics
- There are many topics that should be researched and looked into, I think all around this subjected should be prioritized.
- Agrivoltaics
- Ideas I have would be the climate awareness because I feel like not many people fully care about this problem, and its affecting us all. I think organizations to due with water should be prioritized because the water is a huge problem right now.
- Agrivoltaics
- We can build many farms
- Agriculture under solar panels - Agrivoltaics, or APV
- I think prioritizing supporting local solar and storage projects will have big impact to climate pollution reduction and resilience particularly in rural communities which frequently don't have access to these resources.

The Las Cruces Sustainability Office is working on projects to transition energy in-efficient low-income housing to energy efficient housing. They need more resources to be able to increase the number of low-income families reached. There are about 13K families that could benefit from weatherization and retrofit services in Las Cruces, alone, not to mention the County. Impacts would include lower energy burdens, low carbon emissions, and increased family health. Community college trained weatherization assessors and appliance installers would create middle income jobs and family security. Contact Lisa LaRocque, LC Sustainability Director for many details and resources needed.

- Priority should be given to the lowest hanging fruit like remote work. Incentives should be given to state, local gov and companies that allow employees to reduce their carbon foot print by allowing remote work. The evidence is shown from Covid 19, that cleaner air and a variety of impacts to wildlife etc can occur with out humans using transportation constantly. This also impacts energy use in big buildings.
- Quivira Coalition does a lot of work with New Mexicans to help implement sustainable agriculture and ranching practices. Working with locals directly is important as folks may talk among themselves which further spreads sustainable and beneficial practices that will make our state better. There was also a "Compost Bill" introduced in the legislative session this year. This needs to be supported. We can maintain livelihoods by caring for our soils and we can generate enough food for everyone in this state, from this state.
- California Central Valley Air Quality Control Board program to assist low income residents trade in a non-smog compliant vehicle for a "new" used electric or low emissions vehicle.
- 1. Soil testing and improvement in forest treatments - Healthy Soils/Santa Fe Mt. Resiliency partners 2. Agricultural land regeneration/restoration- Healthy Soils/SF Market Institute 3. Protect Climate Refugia for wildlife, plant life, outdoor activities - Caja Del Rio (a Climate Atlas listed area) Coalition to protect Caja connectivity, cultural sites and natural resources from infrastructure/development 4. Private-Public land easements and land conservancy to halt climate altering city sprawl-highways 5. City/County planning to limit size of buildings,

residences, encroachment in the WUI (Wildland-Urban interface that raises wildfire risk and cost), and strict limits on water use, extraction of groundwater, etc

- Expanding public transportation to be a more viable option and beginning to re-work large arterial roads to prioritize biking, walking and transit.
- I think we should bring awareness to water quality in our communities and how it's important to not waste water.

- Pilot projects that use alternative fuels (hydrogen, renewable fuels) to decarbonize without having to replace infrastructure. Power transmission lines developed at the same time are renewable deployment.
- Work through credit unions and utilities to offer financing for clean energy products and allow consumers to pay for them over time via on bill repayment mechanism
- Home energy efficiency upgrades for low-income residents, free or with rebates and discounts. I would love to see a program for mechanics interested in converting ICE vehicles to evs; a maintenance program for certified technicians to do the little maintenance required on evs. I would love to see the Town and County officials and KCEC officials driving around the town and county in evs.
- Tree planting project collaboration with treenm and the City of Las Cruces. Public education and awareness of the importance of water conservation.
- Ecological restoration of forests and watersheds, which is well-funded at state and federal levels, is a major opportunity to drawdown carbon and reduce impacts and mitigate risks of climate change. As funding continues to grow for ecological land management, so does community capacity and workforce development need to grow, too. Our pool of workers and contractors is already very limited, and many LIDAC communities are hiring land managers from outside their communities and sometimes outside of NM.
- You won't get people to buy electric cars until you have the charging stations in place.
- Consider creating grants to further R&D and business incubators for vehicle-to-load equipment and bi-directional chargers for evs to support the Grid. Encourage and subsidize key trades education programs in high schools and community colleges
- Benefits for going solar
- Housing and shelter for low-income individuals can be electrified and solarized to eliminate utility bills in a sector that is (a) largely publicly funded and (b) chronically underfunded. The housing and homelessness sector, which is constantly responding to crisis, could greatly benefit from the investment in their buildings and the redirection of critical resources to their life-saving and very challenging work. As a former Executive Director of a housing/homelessness nonprofit that electrified and solarized our facilities, I know the benefits of this investment firsthand.
- Building robust public transportation and making cities walk able would go a long way in reducing emissions. Prioritizing community gardens in low income and disadvantaged communities.
- Grassroots, frontline, and Indigenous groups should be prioritized. There are many tribal stewardship initiatives, community gardens, and solar energy access projects that align with the goals of the CPRG.
- Los Jardines Institute, Feed the Hood, Earth Care
- Project Feed the Hood Los Jardines
- Most important would be to cut methane emissions in all communities - I would prioritize this as it is the worse GHG and cutting methane has the most short term benefits to communities and for climate change, then I would prioritize transportation and fossil fuel combustion sources, transportation and the energy sector. At the same time I would work on resilience measures that would help populations - green spaces, land management, trades and jobs, education and industries that help support communities. I would look at ROI for all your projects. Please take a pragmatic approach to this :)
- It's about the CRIME people! ABQ and NM in general are TERRIBLE! Get your act together!
- The Environmental Improvement Board (EIB) took little interest and did not want to hear the unintended consequences created by their recent rule make on Clean Cars 2. The mandate to force Electric Vehicles (EV) in rural New Mexico is damaging to the health, safety, and welfare of citizens and the business community. Over 20,000 people from rural New Mexico submitted e-mails opposing the rule, not one email was opened or taken into the record. The EIB should have taken into account the hybrid vehicles that would contribute to real environmental concerns. Now we are hearing of auto manufacturers halting or seriously slowing down the production of EV's due to lack of demand and, the environmental harm that they create through the

Southeast New Mexico needs charging stations if ever electric vehicles are to be considered. Right now, you can't purchase and use an EV because it will run out of juice and leave you stranded. ALSO, bicycle travel infrastructure is badly needed all over the state. The roadways are unsafe to use in most areas, and bicycle lanes and dedicated pathways are non-existent in most areas of the state. It is next to impossible to get rural populations on board with anything involving EVs and bicycle transportation when there is no sign of support for any areas other than the metro areas.

manufacturing and disposal process. Before mandating or creating rules, we must consider the unintended consequences of our actions. This rule is extremely discriminatory to those who live on tribal lands who will be forced to purchase EV's that simply cannot fill the needs they have to haul water, hay etc. They also do not have the electrical infrastructure to their homes, let alone to charge a vehicle.

- Tree New Mexico - urban tree planting and education Ag Land regeneration support with the NM Healthy Soil Working Group
- Electric utility actions on the grid; charging network built out; methane capped; transportation corridors ZET and Hydrogen as allowed for large trucking. Commuters don't need a big car to commute to work, just a small EV. Use larger EV/CNG for longer trips. Expand electric buses and walkable towns in NM so people can get to food centers (farmers market and shops) without cars.
- Food projects like full circle farms, larger composting facilities. Community land trust projects like at midtown Santa Fe to solarize collectively new affordable housing developments. Improved/expanded public transit projects.
- Home solar panels. Recycling.
- The Sierra Club Rio Grande Chapter has a lot of great information about how, what, when, and where we should focus these resources. Check them out there are many great ideas for Climate Pollution Reduction Grants.
- I am 100% behind more electric charging stations along the I-40 corridor, but I am not yet convinced that Hydrogen is the right solution for large trucks, even if it is green.
- Priority should be given to EV infrastructure projects. While charging at home is fine for day-to-day driving, the lack of EV chargers within a reasonable range of each other are sorely lacking. Making the "Every 50 miles" promise a reality is my #1 priority.
- 1. Put up "No Idling" signs at schools where parent vehicles line up for pickup/drop-off. Wisconsin schools have these signs now. 2. All new or replaced roofing projects should use reflective surfaces. Some non-white surfaces are still far more reflective than asphalt so this should not be an onerous requirement. 3. All new or replacement paving should be as reflective as possible. Higher temperatures night and day in Urban heat islands can be deadly to those without air conditioning, and more expensive to those who have air conditioning. 4. Put in Level 3 fast-charging for evs at apartment complexes so as many as need charging can get it. Slower charging limits the number of people who can get charged leading to anxiety. This makes it as convenient and dependable for apartment dwellers as it is now for homeowners who can charge overnight.
- The Las Cruces Sustainability Office is working on projects to transition energy in-efficient low-income housing to energy efficient housing. They need more resources to be able to increase the number of low-income families reached. There are about 13K families that could benefit from weatherization and retrofit services in Las Cruces, alone, not to mention the County. Impacts would include lower energy burdens, low carbon emissions, and increased family health. Community college trained weatherization assessors and appliance installers would create middle income jobs and family security. Contact Lisa Iarocque. LC Sustainability Director for many for details and resources needed.
- South Valley cleanup and land use planning
- Community composting by CABQ, including support for local businesses doing it already. Include much greater, more effective education on the 5 R's for adults and school children.
- More trees everywhere. Solarize all public schools. State should provide electrical infrastructure support for schools to switch both buses and their "other vehicle" fleets to electric (is a section of HB75) Support HB75 in the next session! Support HB104 in the next session!
- Infrastructure development toward safe transportation alternatives to owning a car (mass transit, bicycling, walking) is the most effective and efficient use of any funds toward these ends.
- Efforts should be prioritized for communities based on a combination of vulnerability and exposure to air pollution/heat/climate-driven extreme weather.
- Enough 'planning'. Actually make a difference with funds.
- Roswell is red, red, red. They don't believe in climate change. We JUST got minimal recycling back. So anything that could be done by the state or ngos to help this area would be much appreciated.
- We should prioritize solarization of all buildings, old and new, mandate electrification of all new buildings, vastly expand energy efficiency programs for low income households and renters, and invest in public transportation and railway development to reduce miles traveled in cars. We should not invest in hydrogen as a climate solution. We should also focus on making public buildings and emergency centers energy independent so that in extreme weather events we can support our communities.

- 1. Increased import into NM for Availability of more used clean energy electric and hybrid vehicle's call with tax breaks or grants for middle and low income purchasers, with public education of these vehicles savings to household budget of three cents per mile versus \$.30 per mile for energy to power the vehicles, 2. Grants for more electrical charging infrastructure along main highways and roads, including at commercial gasoline filling stations. 3. Increased clean energy electrification for tribal communities to support Internet infrastructure and reduce their need for unnecessary long distance travel for support services like telehealth, 4. Investments in the development of geothermal energy generation to determine economically beneficial locations for drilling and installation, 5. Increased funding for New Mexico regulatory agencies for inspections and enforcing existing laws by imposing fines on methane emissions in the oil and gas industry, 6. Grants to public schools for clean energy electrification of public schools and purchase of clean energy school buses, 7. Grants to small communities of less than 5000 residents for clean energy electrification of their offices and schools and health clinics and their purchase of clean energy vehicles, 8. Grants for Adding more bicycle lanes along main thoroughfares in towns and cities.
- Local policies to reduce global warming. Incentives to promote climate-friendly behavior. Local education to support climate-friendly behavior.
- Using our geothermal heat for electrification of existing power plants. We could use the existing drilling rigs and trained oil field workers which would help with the transition to renewable energy and reduce our GHG emissions. ALSO, we MUST diversify our economy from the boom/bust oil and gas industry.
- Do your research and learn that this climate agenda is a hoax. Animals are not destroying our environment. People are not destroying our environment. Fossil fuels are not destroying our environment. Mother earth knows how to heal herself. Here are some articles you should get familiar with:
<https://www.ncbi.nlm.nih.gov/pmc/articles/PMC1112950/> <https://www.amazon.com/Climate-CO2-Hoax-Hijacked-Environment/dp/B0C1JB53TD> <https://pitchstonewaters.com/two-princeton-mit-scientists-say-epa-climate-regulations-based-on-a-hoax/>
- Statewide ban of single-use plastic bags/utensils, etc community composting programs assistance for all to retrofit homes for energy efficiency
- Plastic waste should not be allowed in NM. I realize it's impractical to effect plastic food storage at this point, but food suppliers should be charged a deposit on all plastic bottles in our grocery stores, and plastic bags should be banned. Furthermore, those suppliers should be required to collect their plastic waste, at their own expense. If the state developed a plastic recycling program like Tucson has, making building material from it, that would be even better!
- * Remove minimum parking zoning * Reduce amount of lanes across the city and provide dedicated transit lines, separated bike lanes, expand biking network, and expanded walking space. * In fill oversized parking lots with incentivized development for apartments and multi-family housing. * Create a primary North/South rapid transit line along San Mateo. * Create a circular rail system that covers the four quadrants of the city.
- Recycling rebates
- I live in Clovis, but I work in Tucumcari. Tucumcari's streets are filled with deep potholes. People driving on Tucumcari's streets must weave all around to avoid the worst potholes, and then we hit other potholes. I think the poorly maintained streets may contribute to gasoline-powered cars having worse gas mileage than they would have if the streets were smoother. Anything we can do to improve gas mileage, until we can convince more people to buy and drive electric vehicles, it seems to me, would be helpful. Also, both Tucumcari and Clovis have a serious problem with litter. I have noticed that many convenience stores no longer place trash cans in front of their businesses. What are people supposed to do with their candy wrappers and cigarette butts--throw them on the ground? That's pollution, too. Trash thrown on the ground or on a street eventually makes its way into the city's waste water disposal system. We need an intensive, statewide educational program to encourage people to not throw litter onto parking lots, the ground, or anywhere except in a trash receptacle. And we need crews of paid and unpaid (volunteer) people to keep those receptacle emptied as soon as they fill up.
- I would like to install a solar plant at my home that feeds into the grid. Showcase and promote solar power distributed sources, a way to bring people together. With all the division we see politically, we need a common "enemy". Pollution is that enemy. Polluting cars, waste abounds with people and businesses alike, rogue methane releases, dirty air, all the way to cigarette butts... Nobody likes that. I want to help charge New Mexico to make that our mission. Unity to a common enemy.

- Community solar cooperation and engagement of our unprogressive electric coop; Residential Heat pumps/electric/distribution systems to replace propane furnaces and wood stoves in older rural homes / Most of rural NM. Our very stupid transfer station operates like a dump. Recycling is only glass and it's in a locked chain link fence you can't get to. It's not being operated or correctly utilized!! Total Boondoggle and very shameful! Very little infrastructure in rural villages and it's totally UN green! Electric vehicle charging stations! Rural folks commute more miles!
- I think community solar projects should have some priority. I would be very interested in participating in this.
- How plastics can be converted into useful purposes without releasing harmful emissions
- -Vertical axis wind turbines demonstration project for congested interstate sections that generate from vehicle turbulence. - I-25 corridor renewable energy including all rest areas powered by clean energy. -Regenerative agriculture trainers/workshops for farmers. Regenerative ag demonstration fields tied to NMSU, Soil and Water Conservation -Pollinator protection policy including reducing/ banning pesticides, green parks/fields specific for pollinators such as milkweed for monarchs. Pollinator monitoring. - Heat island decrease program- Decrease of asphalt surface, breakup of surfaces with tree planting - Heat emergency response coordinator for establishment of cooling centers, high temperature alerts, ... - Water retention programs for NM soil- Includes overbank flooding for native vegetation regeneration, informal arroyo erosion control, beaver re-establishment - Plastic reduction including removal of non-recyclable plastics such as black pots at plant nurseries, recycle programs for plastic films/ bags - Monitoring of PFAS type compounds in compost, waste treatment, fracking produced water - Reduction of contaminants in fracking waste water. Identification of contaminants. - Thermal energy conversion using abandoned fracking/ oil and gas wells incorporating produced water pumping, lithium extraction (see Salton Sea and other), and electrolysis of contaminated water for green hydrogen production. - Decrease of food waste projects including compost collection, transfer to homeless. - EV demonstration days for dealers and public education Test drives, charging demos - Training/ education projects for plant retailers, plant nurseries, landscapers on problem exotic plants, increased focus on native/ xeriscape plant. - Green fuel alternatives at airports - -
- Statewide and local building codes for commercial and housing purposes need to be revised to include requirements for the implementation of solar assist water heaters, and other electrical components, grey water retrieval for landscaping, solar parking structure. All new neighborhood developments need to include larger green spaces that are well xeriscape and maintained. New Mexico has an abundance of sunny and windy days and a shortage of water. It is time to be more thoughtful and intentional with our environment with respect to building.
- Partner with Family Friendly NM to support employers to implement green workplace policies and education for employees.
- Acequia regeneration protection, wildlife and wildlife corridors, species reintroductions, small scale solar and wind projects in the hollowed out villages in Northern New Mexico. Alternative energy powered transportation, better broadband . Soil restoration/reclamation, irrigation and more efficient and crop wise food growing in rural NM that make it possible for people to live rurally and still be connected to and invested in the cities.
- Greater number of inspectors/inspections and heavier fines for violations in oil and gas fields.
- Energy storage projects are very important.
- Covering parking areas with solar panels and using roof surfaces of big-box stores for solar panels. Increasing number and speed of EV charging stations.
- Safe showers and bathrooms for unhoused people. RENT CONTROL. Better bus service in bus-starved parts of Albuquerque.
- Public and published conversations involving citizens, scientists and ecologists/environmentalists to be heard by citizens and elected leaders.
- The State should use the EPA dollars to create a fund that local government should have access to for pollution reduction that have real economic and job opportunities for most impacted communities.
- Climate change psas and informational presentations
- Reach out to rural and tribal communities to assist with the development of their own visions/comprehensive action plans that are grounded in practical and sustainable responses/solutions to climate change in their own regions and communities and that include real possibilities for the creation of circular economies
- CEED proposal (hope Taos County receives the grant); Community Resiliency Coalition
- New Earth Project (an ambitious, ongoing composting/waste reduction/environmental clean-up and rehabilitation program) run by UGWA Director Carol Ann Fugagli; this Grant Co program primarily involves

area youth, but is striving to become a state-wide program; could use a boost from federal funds (and supportive state legislation). People of ALL ages would ideally participate. And it could become self-sustaining.....not grant-dependent! It's already supported by local environmentalists, educators and Senator Siah Hemphill. Kids and adults hereabouts need more outdoor education and experience programs Elders need help getting out and about without driving themselves! A (non-Uber/Lyft) taxi/delivery service is DESPERATELY needed here and elsewhere in small NM towns.....but an up-and-coming Senior Village project has already dismissed transportation as a possible service (insurance issues)!!

- Mandate clean auto emissions programs. Require emissions testing for all autos. Quickly phase out, older vehicles with high emissions and pollution.
- Los Alamos Resiliency Energy and Sustainability Plan
- 1.NM needs to address the presence of open air sites, and plumes that contain radioactive substances 2. The state needs to press for federal technology for cleanup of radioactive substances in the soil and set up a system of protocols. Abandoned Sites are going to be more problematic when severe rainstorms, and windstorms occur in open air and underground water sites. The radioactive substances will go where the weather takes them. The Rio Grande is at risk from major pollution from the chromium plume from LANL. That is going to affect people downstream as well as water availability. It is not if it happens but when it happens. Its too late if we do not have prevention and mitigation systems in place.
- And then write our idea : the State should use the EPA dollars to create a fund that local government should have access to for pollution reduction that have real economic and job opportunities for most impacted communities.
- My organization works with watershed collaboratives in the state that do hyper-local restoration activities of forests and watersheds and involve the community (including through YCC grants)
- Train installers, electricians, plumbers etc for electrification. Study alternatives to expensive electrical panel upgrades such as circuit splitters. Study viability of swamp coolers as temperatures increase and persist.
- Funding to assist with water harvesting; composting; improving soil health and gardening in our arid region; projects to utilize churches, community centers and school for emergencies, cooling centers, heating centers and preparedness; huge effort to move the state economically to transition from fossil fuels into other water appropriate technologies; restrictions on water use and industries coming into the state...accentuate the culture, beauty of the state and the future into climate change in positive ways
- Our area (so far) has not experienced serious weather-related issues. The most serious threats we face is continued drought, potentially disastrous wildfires that could pose a catastrophic threat to our town, and concerns about water reserves for future generations. Water use and retaining local public control of available water resources is paramount, along with insuring water quality.
- The state should have all the resources it needs to stop methane loss from current and retired oil and gas industry sites as quickly as possible. This is perhaps the largest lever NM has to address climate change in the near term. Though it will be challenging to go against the animal agriculture industry and lobby, we need to educate people about the positive climate and environmental impact of reducing meat consumption, especially targeting beef. This is something everyone can do for the climate, but it will require public education.
- New Mexico agriculture needs to focus on crops that can be grown with low water consumption. There needs to be a transition away from water intensive crops like alfalfa and pecans. Irrigated agriculture should employ drip irrigation to conserve water.
- Also important to expand our electric grid to increase the capacity (on a regional level with men states) to handle the additional electrical load as people and businesses convert from fossil fuels to electricity.
- Together for Brothers - Transportation, ride sharing, biking, bus riding programming and initiatives. Keshet Dance & Center for the Arts - Outdoor Recreation, Environmental education via the arts Conservation Carnival - Outdoor Recreation, Entertainment and Environmental Education
- Solar Access Fund, Microgrid development, free public transit with expanded routes and frequency, capping all orphaned leaking methane wells, prototypes of environmentally friendlier energy storage (not explosive, flammable lithium cells) like thermal storage and hydropower.
- The State should use the EPA dollars to create a fund that local government should have access to for pollution reduction that have real economic and job opportunities for most impacted communities.
- Support local agriculture and support locals shops. Go back to indigenous groups and how they used to support the land.

- The State should use the EPA dollars to create a fund that local government should have access to for pollution reduction that have real economic and job opportunities for most impacted communities.
- Southeast New Mexico needs charging stations if ever electric vehicles are to be considered. Right now you can't purchase and use an EV because it will run out of juice and leave you stranded. ALSO, bicycle travel infrastructure is badly needed all over the state. The roadways are unsafe to use in most areas, and bicycle lanes and dedicated pathways are non-existent in most areas of the state. It is next to impossible to get rural populations on board with anything involving evs and bicycle transportation when there is no sign of support for any areas other than the metro areas.
- 1. The 2-3-2 Cohesive Strategy Partnership (2-3-2) is a conglomerate of place-based collaboratives, a team of teams whose geography encompasses 2 watersheds, 3 rivers, and 2 states. They strive to work together to protect and preserve the forest health, water quality, wildlife habitat and communities within the San Juan, Chama and Rio Grande Watershed Landscapes. They implement a cohesive approach that supports a coordinated, landscape-scale effort that emphasizes public and private partnerships, bridges geographic boundaries and addresses agency management constraints to deliver integrated results that cannot be accomplished when working separately. 2. Rio Grande Return - Rio Grande Return restores riverscapes and ecosystems unique to the arid Southwest using low-tech and process-based methods to foster resilience, adaptive capacity and stewardship in these important land and water resources. Rio Grande Return has done work in the Chama area to restore creeks in the headwaters of the Rio Chama.
- Creation of the Hunter Arts and agricultural Center on Mainstreet. Removing blight to create a living ecojustice museum that retrains those in recovery in green trades, and provides workshops for tourists and community on soil remediation through plants, green building, solarization, etc. Currently partnering with NNMC and NMSU. Would retrain workforce and attract tourists. Could include charging stations, etc.
- The state should use the EPA money to create a fund local government can access for pollution reduction projects that create real economic and job opportunities for the most impacted communities
- The State should use the EPA dollars to create a fund that local government should have access to for pollution reduction that have real economic and job opportunities for most impacted communities.
- We could work on homelessness and climate change at the same time. In places like Albuquerque empty lots could have both tiny homes, and green space added. The green space could be for food or just vegetation. Improved public transit across the state would help. Of course helping working class families afford stable housing, and to have that housing have clean energy would be major progress.
- I am fascinated by solar panels and more efficient batteries and hope these can be used to reduce pollution and the devastating effects of climate change
- We need renewable energy deployment to be a TOP priority. Please add renewable energy - solarizations
Solarize all schools
Solarize all public buildings
Solarize all nonprofits
Solarize public infrastructure
- The state should use the EPA money to create a fund local government can access for pollution reduction projects that create real economic and job opportunities for the most impacted communities
- Although MHD trucks make up only 5% of all vehicles on the road nationally, they are responsible for 30% of on-road greenhouse gas emissions and over 50% of on-road dangerous fine particulate matter (PM2.5) emissions across the country. Given this statement, as a community college, can we get help creating an 'electric/hydrogen big rig' repair program (as opposed to the traditional diesel mechanic program seen for the last half decade or more?)
- The State should use the EPA dollars to create a fund that local government should have access to for pollution reduction that have real economic and job opportunities for most impacted communities.
- There are many local groups that are currently active and knowledgeable and involved in this project such as Sierra Club.
- The State should use the EPA money to create a fund local government can access for pollution reduction projects that create real economic and job opportunities for the most impacted communities.
- BIPOC led organizations, tribal governments, rural communities, agricultural communities
- Pipeline projects/programs for green jobs led by local labor and community organizations
- Have to think about this.
- We ask that the state create a fund that will give local governments access to those federal dollars. We know what our communities need. We want to have direct say on how to utilize and leverage funding ensuring the best outcomes for ourselves, families and communities.

- We need renewable energy deployment to be a TOP priority. Please add renewable energy - solarizations
Solarize all schools Solarize all public buildings Solarize all nonprofits Solarize public infrastructure There is nothing about transitioning off of fossil fuels even though the oil and gas sector is the largest source of emissions in the state of New Mexico. Invest in transition planning - to help communities find economic alternatives to the oil and gas and polluting industries. Community-led Bioremediation and cleanup Monitoring oil and gas operations and other polluting industries Cleanup of abandoned wells Cleanup abandoned mines Public Transit Accessible, reliable public transportation(trains, buses, etc) Free bus service across the state - expanded bus routes Resilience Planting trees - heat island effect mitigation Community gardens Erosion control and mitigation and compost - to maximize soil's ability to store carbon
- Investing in a free and accessible public transportation system - reduce reliance on cars! Support urban green spaces - parks, community gardens, trees, etc. Prevent further investment into oil and gas and instead focus on solar and wind energy - esp. Solarizing schools and public buildings.
- Taos Land Trust, tree planting, ecosystem, riparian, and watershed protections and restoration
- The state should use the EPA dollars to create a fund that local government should have access to for pollution reduction that have real economic and job opportunities for most impacted communities
- More infrastructure for public transportation within and among cities along the state. Adoption of sustainable techniques in the construction of houses and buildings on a way that impacts savings energy, for example the incorporation of bioclimatic architecture techniques. Bioremediation A review of the food system in the state in relation with the use of petroleum based products. Diminishing the importing of food from far away countries. Reducing plastic packaging of food, reducing use of petroleum based pesticides used in agriculture and landscaping.
- Creation of a waste biomass centered local economy to perform forest and ecosystem restoration work; pyrolysis of liability biomass for clean energy (displacing fossil fuels for heat and electricity generation) and carbon sequestration; use of woody biomass in food waste composting; improvement of agricultural soils productivity (and home gardens). Gila woodnet and Upper Gila Watershed Alliance are actively engaged in all of the above, both locally (Grant Co.) And statewide.
- I think the best plan that I think of daily is better public transportation so less cars have to be used daily.
- We need renewable energy deployment to be a TOP priority. Please add renewable energy - solarizations
Solarize all schools Solarize all public buildings Solarize all nonprofits Solarize public infrastructure There is nothing about transitioning off of fossil fuels even though the oil and gas sector is the largest source of emissions in the state of New Mexico. Invest in transition planning - to help communities find economic alternatives to the oil and gas and polluting industries. Community-led Bioremediation and cleanup Monitoring oil and gas operations and other polluting industries Cleanup of abandoned wells Cleanup abandoned mines Public Transit Accessible, reliable public transportation(trains, buses, etc) Free bus service across the state - expanded bus routes Resilience Planting trees - heat island effect mitigation Community gardens Erosion control and mitigation and compost - to maximize soil's ability to store carbon
- The State should use the EPA dollars to create a fund that local government should have access to for pollution reduction that has real economic and job opportunities for most impacted communities.
- It would be great if we could add solar panels and composting at schools to give kinds hands on environmental education and have an expanded and more accessible public transportation system
- What I just said on last slide.
- Planting trees - heat island effect mitigation Community gardens Erosion control and mitigation and compost - to maximize soil's ability to store carbon Accessible, reliable public transportation(trains, buses, etc) Free bus service across the state - expanded bus routes
- Local communities revisit cooling centers; more inclusive of the population, diverse capacities (pool, medical care, entertainment, food, library). Better advisory capacity and inclusivity (80, 90 and 100 F thresholds). Mental health care access, and elderly assistance care needs, equities
- Directly impacted organizations that are prioritizing development of good jobs through unions and schools
- Transitioning conventional agriculture to regenerative stop funding military projects as they are one of the biggest contributors to climate change
- When is the EPA going to clean up Church Rock and why isn't the community and surrounding community not being informed. I think more transparency needs to be available.

- I belong to CNMAS (Central NM Audubon) & Xerces Society (for invertebrate conservation) so my priorities are in Birds & Bugs! I would like to see pollinator gardens in our city parks and to bring awareness to our legislators and the public for the need to address Climate issues!
- Electric trains Greater & more affordable commuter train to/from Abq
- Evs are a doomed technology. Ford & Toyota are losing interest in this technology. Plan for & support the next (replacement) evolution of engine technology.
- EV charging MUST be affordable, state & federal funds should not be used for \$\$\$ kwh rates. Level 3 should be under 40 cents, and Level 2 should be no more than 25 cents...preferably the utility price for kwh + a few cents. Opposed to Clean I-40 Tradeport Corridor if there is any H2 included.
- As chair of RGSC-CG Zero Waste Team I would like to explore how we can work with you on educational and other projects.
- See above comments. Money from warheads to windmills which follow the landmark book by Timmon Wallis "Warheads to Windmills". Over 50% of our national budget goes to militarism! A recent article in the . Guardian on the effects of climate change impacts on global climate change. New Mexico military bases are involved in the Gaza and Ukraine war.
- Prioritizing getting funding and support to small to mid-size local farmers for climate resilient and regenerative growing practices. I also support investment in electric vehicles but not hydrogen. Please prioritize electrification.
- Local fire and other emergency response entities, public schools, small incorporated and unincorporated and tribal municipalities and pueblos to allocate to their local businesses to support lower energy consumption.
- I do not support the hydrogen aspects of this grant proposal.
- Microgrids with integrated solar and storage like at Kirtland AFB
- I support addition of public charging infrastructure for EV trucks, but not hydrogen. Our public funds shouldn't be funding hydrogen. The few areas where hydrogen may be valuable in the future are "last mile" solutions for a very few applications, methane is disastrously leaky and no amount of carbon capture (as energy-intensive as transporting methane, making hydrogen then capturing the carbon and sequestering it is) would make up for even 2% leakage rates, and right now the Permian is at 9% leakage. Long-haul can be done by battery, a much more efficient, less expensive and safer solution: <https://www.volteum.io/blog/The-electrification-of-long-haul-trucking-A-game-changer-for-fleet-electrification>
- Water and wastewater resilience programs to upgrade and expand facilities to improve their water quantity, water quality, energy supply. Application of advanced water reuse of wastewater and brackish water - if not potable reuse, then application to 'purple pipe' and hydrogen production.
- Urban greenhouse farming. Eventually projects could also take sequestered CO2 or CO2 out of atmosphere to use in greenhouse operations
- Nothing specific, but a concerted effort on focusing on the social impacts of climate change. Specifically, how it disproportionately affects minority communities in NM.
- We should monitor oil and gas production both for methane, water use, waste products, and other environmental impacts.
- I use public transportation. Our local Gallup Express Bus System needs more funding for more buses for more routes and more drivers. HELP! Residential Building Codes need to catch up with the kind of homes people want, i.e., passive solar windows, composting toilets, etc. (i.e. Earth-ship, earth-berm). Every building, municipal, residential, retail, industrial, schools, university, ALL buildings needs to be retrofitted with ON-SITE ELECTRICAL ENERGY GENERATION. I attend the Gallup Solar meetings each month.
- Public Power should be prioritized.
- Expanding community air monitoring projects, access, and funding; community gardens/community food hubs; urban food services; investment in public transportation/expanding access/expanding frequency of rides; natural ecosystems in urban spaces; public transit from urban to rural; restructuring urban spaces for walkability (with prioritized input from local communities)
- Health, Environmental, and Equity Impacts (HEEI) rulemaking legislation at all levels of New Mexico government and Health Impacts Analysis (HIA). Ie: Mountain View Coalition air pollution, water nitrate plume, lead mercury and other industrial chemicals in soil
- Commercial and residential communities being run by a local non-profit organization could be expanded statewide as well as community gardens that are springing up to strengthen the food supply chain and reduce emissions due to transportation. Protect our open spaces to protect Biodiversity. Study the effects of EMF from

the cell towers and the pesticides on the bee population and implement protections. Along with a food hub to manage the local farmers to coordinate crop rotation. Wind and Solar Programs should be prioritized. There should be investment in transition planning to help communities find alternatives to fossil fuels. Cap all the abandoned oil wells!!!

- Incentivos para paneles solares y ayuda para comprar carros electricos
- Solarize all schools Solarize all public buildings Solarize all nonprofits Solarize public infrastructure Invest in transition planning - to help communities find economic alternatives to the oil and gas and polluting industries. Community-led Bioremediation and cleanup Monitoring oil and gas operations and other polluting industries Cleanup of abandoned wells Cleanup abandoned mines Accessible, reliable public transportation (trains, buses, etc) Free bus service across the state - expanded bus routes Planting trees - heat island effect mitigation Community gardens Erosion control and mitigation and compost - to maximize soil's ability to store carbon
- More recycling bins, specifically in public schools, even if there is a lot of food that is going to the trash, is a good idea to recycle that food.
- Informar a la comunidad en general de los daños que están pasando y hacer campañas o proyectos de posibles soluciones para todos
- The general public's ability to afford electric vehicles is an issue.
- Start taxing business who make employees drive to work, when their jobs can be done remotely. Add a tax for every mile the employees drive that is further than the closest location of that business to their home. Rebuild mobile homes. Mine is 2x4, leaky windows, roof, leaky plumbing, soft floors, old appliances and I can do nothing about it. 2012 lending laws said that mobile homes with additions cannot be refinanced, plus interest rates are too high! Create low interest rate loans for people like me. Barely keeping healthy food on the table, but make too much money for help. We need to get extreme about housing, but help people do it!
- Look at YUCCA's recommendations for state actions
- Improve public transportation to reduce use of individual vehicles. Improve energy efficiency of buildings. Education on ways to reduce our dependency on energy - not just new sources of green energy
- More solar panels on public buildings and incentives for solar panels on private property. More easily accessible and reliable and affordable public transportation.
- Move oil drilling away from homes and schools for better air quality. More health care for elderly, children and immune compromised due to horrible air pollutants.
- Community garden projects, growing food, composting,
- New Mexico Water Advocates push to implement State-Government-chartered 2022 Water Policy and Infrastructure Task Force's analysis.
- More affordable and more accessible public transit.
- Huertos urbanos
- I believe that everyone, mostly including students from our local schools should become a lot more educated on this matter as it is a very prominent and ongoing issue within our society. We can follow through with projects for our youth in schools.
- Investment in just transition planning for communities dependent on extractive industry. Until we find alternative revenue streams and do alternatives modeling and investment - folks in these communities and our state budget are held hostage. In order to reduce extraction of fossil fuels - which is REALLY what's needed to address climate change - we need to support communities to transition their economies.
- None of this will make any difference until the New Mexico Environment Department is made to enforce existing environmental laws. It does absolutely No Good to pass programs that have little or no chance of being implemented, environmental laws that only apply to wealthy white people and unfairly burden people of color and American Indian tribes and economically disadvantaged populations.
- Grants to indigenous and youth organizations such as YUCCA and the Pueblo Alliance. We need more community based solar arrays instead of just funding big corporate projects that need extensive transmission lines
- Solar and wind power generated homes, schools government buildings
- Prosperity Works is doing excellent work to weatherize and increase access to clean energy for low income community members. Agrivoltaics like the Jack's Solar Garden in Colorado can help farmers improve crop yield and keep farmland active. Regenerative farming practice and education at Rio Grande Community Farm in Albuquerque and agrinature Center in Los Ranchos. Community composting efforts. Shared EV networks like EVIE in Minneapolis. Most HVAC and Plumbing work is emergency work, so having incentives that ensure the

cheapest replacement available is higher efficiency. Expand the trades programs - there is a massive shortage of electricians and plumbers and HVAC techs to implement any of these new electrification efforts. Community-owned community solar projects. All of these things need low cost, local, easy to get financing that is "patient" like Green Banks are doing. Work with the NM PRC to implement "Utility Inclusive Investment" programs like other utilities are doing across the country so efficiency and electrification upgrades are financed on utility bills and offer savings from day 1.

- Please develop and support initiatives to reduce car dependency and promote public transit access, bike infrastructure, and pedestrian infrastructure.
- "Renewable energy? What do we do when the wind isn't blowing and the sun isn't shining?" -- this is a worn-out refrain often used to convince the public that we need nuclear power for "baseline" (reliable) electricity. The usual response is that if we want to avoid nuclear, we need lots and lots of huge lithium batteries (the size of semi-trucks). However, there are other ways to store energy that are less disruptive. One strategy for balancing electrical loads is to maximize use of excess solar and wind to cool water or to charge batteries that can run appliances which are only used for a portion of the day, such as induction stoves (See below). For cooling a large public building, one proposal is to use surplus wind energy during the night to cool water that is stored in a large cistern or tank within or under the building. During the day, air can be cooled by circulating it through the cooled water via pipes and then circulated through the building to cool it, saving electrical costs during the hours of peak usage. I read about this idea in the 80's. I don't know whether the idea has been implemented. Perhaps surplus solar energy that is fed to the grid could be used to circulate the air through the cistern or tank and then through the building. This would relieve utilities of the problem of what to do with surplus rooftop solar electricity -- instead of trying to pass laws or charge fees to actually discourage people from installing rooftop solar! More recently, I read that induction stoves, which use a lot of electricity, could be run by battery systems (integrated into the design of the stove) that could be charged with renewable energy during the long periods of the day when the stove is not being used for cooking. I have also heard that surplus energy can be stored by a flywheel. Storage of renewable energy is an issue that must be addressed with innovative means like the ones described above, to reduce the amount of minerals -- especially lithium -- that must be mined and thereby reduce the amount of environmental disturbance that mining inevitably brings.
- Grants for distributed residential solar systems + job training; grants to solarize public buildings; in-person community outreach to plan community-driven economic/energy transitions that create new and better jobs.
- Rain Water catchment systems , water conservation, gardening, weatherizing, indigenous agriculture and teachings, how to take care of land, air, water..
- Windmills rather than industrial wind turbines; home solar; NO hydrogen
- I think New Mexico should offer home building grants to build from adobe and locally harvested materials. These grants could also be promoted as eco tourism by invitation tourism to help with traditional home building. Adobe building could become cultural tourism and a win, win, win for low income housing and green economy
- I have solar panels that also charge my EV (Installed 220 power On garage to fast charge for my EV.) I pay \$8.16 to connect to the grid for most of the year,. I pay more in the 3 cooler months of the year to support furnace heating. Given that I'm 80 years old, the cost of converting to a heat pump is not cost effective. Were I younger, I would invest in a heat pump. As a fossil fuel, hydrogen is NOT a solution. No to fossil fuels to protect our environment.
- Geothermal for home and business heating and cooling; waste reduction technology, such as biodigesters to convert organic waste to home energy
- Agricultural programming with City and county open space to support youth, farmers, families and frontline communities
- Poder cosechar nuestros propios cultivos y sembrar $\sqrt{\circ}$ rboles
- Planting trees to mitigate the urban heat island effect, rather than the current fashion of turning all the medians into cement or gravel. Encouragement of community gardens and regenerative gardening and at-scale regenerative agriculture and pastoralism. Support healthy soils initiatives as carbon sinks. Learn to use a bit of water to prevent desertification and change the microclimate and support the small water cycle. Work with Indigenous experts on implementing cultural burning (and other projects and processes). I support including the youth in all decision-making, especially YUCCA (Youth United for Climate Crisis Action) and if there are any local chapters of Sunrise. We need microgrids, which could be implemented in semi-rural suburbs such as Eldorado, NOT large-scale commercial corporate-owned battery storage facilities that will

damage the environment and biodiversity and pose a danger to nearby communities. And PLEASE enforce methane regulations and cap off wells emitting methane. If this could be done at scale worldwide, including dealing with huge methane-emitting landfills (which is less of a problem here than in some countries such as India) it could take us a long way towards the goal of zero emissions very quickly, according to a recent article in the Guardian.

- Green building; public utility companies, truly owned by the public; community solar projects accessible to neighborhoods. New Energy Economy works to solarize community facilities.
- Solar powered lighting, community based non-profits
- Grants for youth jobs development
- Planning
- Plant more trees in urban areas encourage more public transportation use by paying people to use it. Increase rail runner routes and extend to taos make solar accessible to everyone, especially on garages
- Invest in job training in renewable energy jobs more electric public transport cleaning up abandoned wells.
- Community input is vital . . . Yucca & Earth Care
- Community gardens and composts. Community led remediation and clean up. Solarize schools and public infrastructure. Better public transportation that doesn't use fossil fuels and making cities and towns walk able. Bike able and walk able cities and towns would reduce fossil fuel use from cars, benefit working people by allowing them to spend less on transportation, and increase social engagement in the community. Reducing and eliminating fossil fuels is key. Investing in programs and training that allow working people to transfer from oil and gas jobs is very important.
- You've covered everything here!
- Hosting training programs for youth to learn trade skills linked to solar installation. Buying panels for low and middle-income people, community centers, and businesses. Green-friendly public transportation. Few local Orgs in Los Lunas
- Bernalillo County has an amazing amount of open space. I think that more public improvement projects that would be done anyways can be done with climate mitigation in mind. Instead of parking space minimums, how about shade tree minimums or stormwater runoff mitigation? It's better to work smarter than harder. The same goes for private developments.. Don't let developers extend urban sprawl unchecked.. Require them to put some of those profits into improving soil and water quality.
- Sustainability guidelines and requirements for Master Plans created by developers in coordination with municipalities and counties, specifically with respect to water, agriculture, transportation, biodiversity, and cultural elements. We thought some of these would be addressed by the state's Regional Plans Bill passed in the 2023 legislative session, but for which grossly insufficient funding has been provided.
- Consider small hydro power units on the Rio Grande and modular nuclear generating units.
- I would love to see more investment in public transportation and more green spaces!
- I do not know of any existing initiatives in San Miguel County. I would suggest establishing a viable recycling program in at least Las Vegas and Pecos along with establishing a disposal/recycling program for brush/green waste so that residents can reduce the fuel loads around their homes. People tend not to do this because there isn't a way to dispose of the brush legally, or if they do clear brush/fuel on their property then they illegally dispose of it on Forest Service land increasing wildfire risks there.
- Less government involvement
- Projects that clean and reuse water would be great, projects that put electrical in the ground instead of adding more electromagnetic and wireless communication.
- Work more closely with tribal councils regarding environmental stewardship; food independence and local farm support; improved public transportation infrastructure to eliminate cars on the road; pay for solar fitting on low income houses
- Green stormwater infrastructure through the city and county planning departments and landscape architecture firms. More bike and pedestrian infrastructure to replace vehicle centric streetscape
- Let's put solar on all of our schools!
- Hands-on projects for school children, sequenced by age-appropriateness....could be linked to local environmental organizations if not appropriate for school classes.
- Bernco weed management needs help. There are invasive weeds everywhere on public land, such as the laterals. Nobody seems to know how to deal with these and they then make it worse by using methods that

actually increase seed dispersion and ecological problems in the community. (master gardeners and using knowledge available on the internet already would help, along with more education and funding)

- The most rural communities across the state. A focus on unincorporated communities.
- Prioritize adoption and use of solar energy with consumer subsidies for solar-generated electricity.
- Taos leaders have come together over the last year to discuss local climate action - the group is currently called the Resilient Community group. It would be interesting to understand the viability of a solar project that helps shade acequias to keep the water cool, perhaps involve agrivoltaics, and the solar could feed into Kit Carson's grid or directly benefit the landowners on which the panels are erected. Battery back up as part of this system would be helpful in extreme weather events. Micro grid deployment throughout the county.
- Prioritize vegetation and the growth and production of keeping food that keeps humans healthy
- Solar panels
- Every school in New Mexico should have dedicated solar panels on top of carports built on school property. Energy produced during summer months could offset energy costs during winter months.
- We need build schools and hire more teachers
- Should get information from farmers and ranchers before anyone else. Because it impacts them the most.
- Fossil fuels should be the highest priority
- More recycling programs or centers
- Solar panel and wind turbine is priority, and reduce car pollution
- Don't think dumping money is good for state focus education and using funding efficiently. Electric buses were disaster, tech isn't there. Media intentionally keeps public ignorant of hassles of electric vehicles.
- Water first
- Education of the general public to be more and more conscious
- Needs more charging station
- Make it easier for farmers to have incentives.
- Definitely prioritize solar energy
- Elementary school down the road, there is no city utilities. They have wells and septic. She wish there is a way to help that school
- Projects against fracking. Pollution
- Prioritize clean water, having enough water for everything.
- Use renewable energy
- Water and land cleanup
- State homeland security could do a lot for everyone.
- Landfills
- Reduce climate change
- Solar on traffics street lights, has fans that would work for capturing fumes of cars, and trucks on roads with grills underneath
- More education, more recycling, less pollutants
- Need to fix and pave the roads in the community
- Development of wind and solar
- Increase wind turbines in south of state, solar incentives
- Solar and biodiversity
- Get rid of EV cars
- Conserver water
- Take advantage air and wind solar power
- We need to have a better train system. Need more electric train tracks for people who don't have cars. Train system like France.
- The Sierra club and climate education in schools.
- We don't do enough to recycle
- Get rid of septic tanks, education in schools about what happens when people abuse environment and surroundings, and cost it takes to improve areas, make sure we know importance of maintaining our land and water
- EPA recycle and reuses to make fuel and roads
- Getting car emissions down, fossil fuels
- Recycling program

- Mini generators for the water, windmills.
- Nuclear energy
- Birth control and close border
- More solar panels for the state
- Organizations to be prioritized
- Climate pollution reduction grant
- I think that some of the regulation should be reinstated
- Education for our children for all the topics mentioned. So they can become aware and help fix the issues in hand.
- There is a program through the nm annual universities across the country to help to clean air and environment. Educate the general public...i.e. Riding bike
- E-bikes and electric transportation, investigating and understanding native American land stewardship. Creative groups that can think of new approaches.
- Public schools transitioning to a different source other than electric & gas pumps, solar energy panels
- Water improvement
- Better safety for pedestrian
- Develop better batteries, fix up old homes, work more in field
- I don't want to see uranium mining or coal mining.
- Renewable energy and strong education
- Aluminum and plastic recycling collection in their local area. Reopen environmental education office that used to exist. / none
- Red water pond road community, increase hours of public bus transportation and area coverage, and encourage people to take trains
- Water quality
- Urban planting
- Solar energy
- Recycling programs
- Recycle program is needed.
- Better gas solution
- We need to improve public transportation in Alamogordo
- Wind farms, more hydroelectric and water purification, solar
- Everything that has to do with energy to do away with all of the pollution- cleaning center
- Trail development
- Renewable energy
- Local schools
- Increased public transportation
- Recycle methods of watering
- School should be involved and village government
- Environmental
- Public schools because they are having kids grow their own produce. Its a great model and have more support, not just financial but educational inside and outside the school system.
- Do not have enough low income and housing available .
- Fuel, air quality
- Waste priority
- More education fire reduction retraining people are already educating as many as they can and getting paid
- Everyone should know that they have a home and they will be fed and have a sense of purpose. This would be ideal. Right now this has been taken away from people. Codes are good for efficiency but how will people survive.
- Demanding that water bottlers use digestible material.
- People in middle get left out not low income
- Recycling program for the community and for the schools, and water conservation and availability, and stop the chemical use in the agricultural community.

- State leaders, and local leaders ,county commissioners, to drive through the community and have neighbors clean their yards and get rid of trash ,and old cars which contributes to fires and make it a mandate to keep places clean to start at local level
- Starting small community gardens in local areas. Switching to renewable clean energy.
- Transition to electric vehicles and electrification of homes and businesses
- Solar panels for roofing
- One is what to do with our waste no recycling centers!! Proper water management not keeping the water clean and water is very vital. The underground is needed to have attention to help our state!!!
- Consider cleanup and landscaping for communities and beautifying roads.
- Water improvement
- Elderly should be prioritized
- USDA is doing good work to help farmers and landowners, funding that encourages landownership
- Solar panels more available wind in rural area
- North central New Mexico economical development district.
- Do not deal with climate issues. Other issues are more important, like inflation.
- Should be prioritized
- Public transportation in rural areas
- All that we have been talking about
- Electric stations to malls, stores, car ports, schools, buildings (solar panels)
- Open oil fields, helping power plants, solid waste
- Trash collecting
- Cleaning env
- Advertise to people on how electrical solar can help people
- Getting politicians to agree and get it done approve something and get it done
- Heat pump, solar & hydrogen cars. Retrofitting coal, natural gas & nuclear plants with supercooled co2 power plants.
- Its way to political in the north
- Wildfires and forest maintenance water shed integrity
- Crops being late because of climate change and less water in the dishes.
- Education on ken trails, everything in the educational programs
- Northern youth project NYP
- Solar panels
- On water quality not emptying sewage into rivers
- All the trash should be picked up and recycled, and the train should not be running using coal, make sure the water is clean and all the rivers should be cleaned of all trash, school buses should be electric.
- Recycling
- Public transportation
- Heathy soils grant
- Have trains run from Gallup to Albuquerque and i25 corridor as well. Rail runner needs to run more times.
- Leave it alone until we have something that is as good and works as good as what we have now
- Needs to be handled better
- Working with the mining industry put people back to work
- Solar panels, rebates for stations for election for charging stations,
- Would like to be more involved in the community
- Farmers need to be more efficient with water and irrigation
- Don't know any of the organization. More organizations to help the community.
- Pollution not bad
- Acequias should be prioritized
- Not familiar with any
- Better care for seniors. Better transportation
- Nuclear power plants
- School should be a prioritized
- Need clean water , clean drinking water, reduce contamination of water , cant put solar because PNM doesn't have enough feeders to absorb , upgrade systems with PNM,

- Composting, improve composting, wind turbines are necessary ,public transportation,, Finding alternative access for electricity
- We have covered it
- Local government should step up help the people that are disadvantage and poor
- Providing green vocation opportunities starting at the high school level.
- Education for sustainability in all forms, and implementation of environmental projects in agricultural. / not sure.
- Education
- The water and the electric helping the homelessness and shelter
- Move beyond capitalistic thinking. Switch to socialism.
- More funding for solar panels
- Renewable energy, climate change ed
- Charging stations need more and solar for all make that cheaper
- Water systems , renewable energy.
- Education and training
- Clean up air port roads radiation
- Anything that was currently mention was a no. Shrink the government due to over regulation. Cut the deficit. Close the borders.
- More recycling and conscience about education on how to make changes for climate in the long run.
- Green energy
- We need to get more people educated.
- Probably renewable energy and recycling
- More monitoring and more education
- Rampant illegal drug homeless
- Incentives should be across the board for everyone
- Composting, recycling, reducing meat consumption, reducing product packaging and plastic use. Water conservation!
- Quality of water
- Forest guardians, Sierra club
- Composting pick-up for neighborhoods, increased and improved recycling of plastics
- Read report that voter wrote on modernization of O'Hare. To educate people on the present infrastructure. 40% of O'Hare flight, should have high speed rail to neighboring cities.
- Support from solar panels
- Make solar more available
- Federal agency coming in to help us
- There are so many but it would have to be home electrification , especially for low income residents.
- More incentives for people to go solar for their homes, incentives community solar projects.
- Help small farmers
- We need more solar program ad wind programs that are affordable ad or more job programs that are implemented for this resources make it for local people to adopt
- Schools need to be program about energy
- There putting up large fields of solar collectors. And they are putting gravel under them . So wild life cant be there
- Help the elders and the handicap
- Climate change is the root of all the problems she and her family faces. Forest fires are the most concerning in the areas that include her and her family.
- Lack of electric stations to charge for electric vehicles
- Politicians should take stronger action on climate issues
- Produce oil and gas affecting air quality
- People need to work to fix the community
- Bring back captain planet for future generations as well as like minded shows so we can educate the future generations on these matters.
- Recycling.
- More trying to solve climate change cause it affect farmer

- Solar panels and wind farms should be expanded
- Renewable energy solar panel's
- More wind power generators...the smaller residential ones
- More money for people who are involved in public transportation
- There is a group that has a recycling program, they should be supported to find more outlets for the recycled materials.
- Grip and UGWA need long term support.
- Water , forest
- We are a small community I will push solar in this community education and healthy finances
- Drill drill
- None. / wind turbines and solar panels.
- Need more programs for recycling
- Unique composting program that can revitalize degraded agricultural fields new earth project-want to expand it statewide, reduce methane , take food waste form school cafe , combine with shredded wood from forest projects
- Every one burns wood and the black smoke sticks to cars.
- Leave no trace project. He's an educator in it. The forest service. The fire dept. To educate the public more.
- Take advantage of solar energy
- The climate program is for citizens not the government officials.
- Some people just don't get it, should have to have water, and trash clean up
- Backfilling drilling projects
- More ideas brought into the community and more education
- Solar panels and wind generation.
- See that oil and gas companies are no longer being in charge and see change in the other changes to make other job opportunities.
- More education
- Organization
- Clean up the power plants in 4 corner areas!
- Environmental education
- Clean water, more solar panels
- Politicians to follow through on what promised when elected
- Affordability
- Everyone to have access to solar energy
- Change perception on community on oil and coal. Having more information on renewable energy
- Program that involves water
- More free educational course and make policy change
- To plant more trees make some damp's for native lands reservations
- Schools be more involved
- Legislatures trying renew communities
- Clean energy with solar power
- Water needs to be better ! Waste water needs to be better and neighborhoods stink due to water and waste is very bad
- Wildfire management
- Require all grocery stores to have solar panels
- Live in the mountains and there is no recycling of plastics. Need to be promoted and available locations to recycle
- Energy pipeline from Los Angeles to New Mexico, EV, development of longer lasting batteries
- Recycling programs being aware of selling plastic bottles to everyone.
- Prevention education
- More budget to educate the public
- Water quality treatment plants, better filtration, better awareness. Las Vegas, NM is struggling with water badly. That focus is important.
- Sewer system in east Pecos ! A recycling center in all of Pecos !
- The education and job programs. Get people employed in the area. Trade programs.

- Incentives for planting native grasses rather than lawns
- County accountability for hazard mitigation plan
- They should do something with the forestry dept. Reseeding and planting trees, need something done with the water systems
- Organic studies teaching people to grow organic again instead of making fake food. Fix food supply
- State wake up to wind and solar, but can go away from fossil fuels, wind farms don't pay for themselves, also solar
- Organization
- Local governments
- Have not had state assistance to help for environmental events
- Solar plant for water treat
- Generating rural development
- Granting of federal funds for people impacted by wildfires
- Protect water aquifers, stop methane releases, terminate cattle grazing on tourist sensitive land
- Being volunteers
- More publicity or more information for general public
- Solar energy incentives
- What is the purpose of contrails?
- Solar
- They should quit streaming in air ! Stop trying to manipulate weather
- Urban food forests
- We should focus more on gun violence and parents shouldn't have any guns in the home. To help out the homeless and the representatives should help us out more
- They need safer transportation and better transportation for renewable energy
- Wind energy
- It should be a priority for them to be responsible for their own waste
- Working with city council for all neighborhoods in Albuquerque. Working with student interns. Create a greener city. Implementing the "dark skies" initiative.
- Tracking our watering being conservative
- Government should help with put solar in their home, they should help with energy efficient cars and just help with energy efficient living!!!!
- Water conservation
- Public transit
- Education of weather conditions
- Clean up jet fuel from Kirkland
- More public transportation in rural areas, more parks & green spaces
- Water open spaces parks keep water in rivers in summer . Get rid of some fossil fuels move to electric vehicles charging stations. Take traffic . Educating people. We need to do something on every level. We all need to do it and it will get done.
- Farm and implementation
- Educate people, advertise on tv
- Commercial building being more environmental friendly, electrical vehicles and more charging stations
- Water contribution
- We got to get rid of fossil fuels, shut down fuels,
- Do something about the diesel spills
- Wind turbines (smaller size, less impact on birds)
- Education
- Water conservation
- Improve air quality
- Lived for 30 years in nm, says more equal distribution of services and benefits to all of society not just the low income or disenfranchised groups.
- Renewable energy utilizing recycle
- State of New Mexico to adopt federal climate laws, the state needs to enforce minimum 1 mile set backs for oil and gas facilities from schools and other business

- Improvement of public transportation, have things closer if possible, have things at least 15 minutes travel distance.
- Continue renewable energy and better aspects of transportation
- Wind turbines, people being aware, less driving
- More education on how to properly recycle, use recycling programs better, and cleanup of lands and water
- National monuments for the Organ Mountains, protect the Rio Grande from being used to flood lands, protect water, monitor businesses when they are water restrictions for home
- Educating kid thru books
- Home improvement energy efficient
- More infilling residual construction, to much energy consecution in driving higher fossil fuel tax
- A lot of vacant land, that needs to be developed with renewable gardens and other energy or food sources instead of vacant land for kids to hang out in and classes on how to be more energy and self reliance.
- Low and moderate income family homes to be in programs and help with air cost, affordable windows. Home energy cost measures to help home retrofit
- Grants for tax deductions for home builders to build green houses (environmentally safe and sound) incentives.
- Solar, wind turbines
- Education on climate change
- Getting people into real homes
- Consistency to get off the ground and get it off the ground!
- Keep water in nm, stop sending it south to Texas. / recycling
- Incentives for vehicles
- The city need to turn off the street lights to save energy and help the birds
- More funds for low income and seniors
- More community input. Let them have a say in these environmental situations. Pay attention to outdated foods that get ignored.
- Working from home, trying to carpool, public education, recycling
- Sustainable building materials
- More drop off recycling bins
- Stop wasting money on it give money back and if don't give money use money for things that matter !Bus tickets to immigrants to go back to their countries !!!!!
- Energy efficacy for homes and commercial buildings.
- Go green composting bins city compost sections
- Safe public transport
- Infrastructure clean energy
- Solar panels
- Invest more in exhaust systems
- We need more EV charging stations
- Agriculture
- Gas stove, gas car just reduce prices
- Controlling speed limits in county
- Using hydrogen as a fuel
- Educating our people, kids in schools, parents don't care, take care of climate
- Anything that will help the community.
- Electric charging stations
- I think it's just matter of educating people in a very big way. It seems like people don't care.
- Tackling fossil fuels and water consumption
- High plains cooperative
- More efficient for electric cars
- Public transportation needs improvements
- Improvements in water infrastructure. MRTCD should be prioritized
- Feels the biggest pollutant should be handled first and the biggest users of fossil fuels and making electric affordable to regular people anyone making under 100 thousand a year.
- Get the charging stations. Continues education on transition
- Use land better, planting flowers

- Solar
- Live in south valley. They have a disposal plant. Have lots of animals in the area. Gases emit concerns and water concerns.
- Paying farmers incentives so they in return they can provide more crops that people can afford and in return the plants will clean the air .
- More education on conserving water, community gardens
- Clean up along highways and pickup after yourself and keep the government out of it
- Composting
- Recycling
- More recycling
- First renewable energy people need solar panels. He was blocked to getting solar panels and get generators. Have the resources to push it. If you want to have people get electric vehicles than put charging stations all over. Electric vehicles cheaper.
- We could get better recycling and aware of others good open space don't trash
- Composting
- They should extend the walking trails along the Rio Grande river so families can get together.
- More education neighborhood watch
- Green spaces
- Emissions on cars do to speeding needs to be monitored that are being ignored
- Better off in the horse and buggy days. Did not have to worry about emissions. As a nation we waste to much energy. We take to much and give enough back.
- County city state governments vote together address together improve. New Mexico needs to work together. State structure all together
- Teaching more of this in schools to our kids for the future.
- Those that reduce carbon dioxide pollutants
- Build housing
- Using cow manure to implement into renewable energy
- Roads for schools
- Income based daycare
- I would like to see more widespread and access to indoor compost machines at a reasonable price. I think reduce the methane gas problems. Particularly from the landfill.
- Start with children in schools
- Renewable energy
- Cost of solar panels on their house
- Carbon sequestration
- The community aren't aware of the problems because they need to be educated, they need someone they could trust to educate them.
- Expand all forms of energy
- Organization should be prioritized
- Low income housing assistance for energy efficiency
- Start at government level first
- Need to prioritize saving water, and flooding issues, needs aqueducts
- I really think that local communities, government, local mayors and elected official and the more we can lead by example than we have more encouraging people and be more involved.
- Monitoring railroad project, cleaning abandoned tracks, removal high metals, more air monitoring on tracks, more monitoring noise pollution
- Implement knowledge about existing grants and programs
- Government based programs to allow more people access to solar panels at minimal cost
- Environmental. Education
- Resource the united states with clean water
- More training to more jobs leaning to green jobs and construction jobs
- More ride sharing, more transportation.
- Farming, factories that use gas but prevents pollution and research that is being done about when we go pass ozone layer....what happens because we lose oxygen.

- Focus on water
- Just starting with simple things such as why Albuquerque does not recycle glass. Making people more environmentally aware as they are very uneducated about these concepts. Trash pick up.
- Building agreements for solar or wind farms on tribal lands...good income for residents
- Everything to solar making it more affordable
- Cultural practices community gardens
- Recycling
- Recycling and waste clean up
- Plant trees
- Water is critical in nm , fire help and rescue
- Pollution
- More information and education on climate change
- There was a deal, about the forest thinning and selling wood cheap or power plants with clean air. Renewable agriculture. Get a ride to go for doctor or stores. Improve internet.
- Whatever services goes to the Daniel Fernandez rec community center
- Water , local installation of charging facility for electric vehicles
- Picking up garbage . Graffiti. Task force for trash , cans . Benches for sitting . Homelessness. Economics will be affected
- Assisting schools with getting better school busses and schools for weather, make sure they have solar panels on roofs/parking spots
- Water is depleted in southwest. More solar panels. Gray water education.
- Trash
- Local forest resilience and traditional agricultural resilience
- Education of the climate change issue
- Public transportation- walking paths, consistent buses or trollies, food co op or fruit market
- Helping people to find ways to get funding to get with the solar panels, and municipal to find a way to education and create and funding for people to get the help to get solar panels .
- Educate while in the school system implanting cause and effect as nuclear as well as community integration such as field trips recycling trips etc., planting gardening, flowers etc..
- I do believe wind turbines are a good idea but not solar panels the battery back up are expensive
- Doesn't mind the solar and wind projects, but getting rid of the fossil fuels is killing us. Don't have resources for electric vehicles. Not reliable electricity all over rural nm.
- Home composting stations or a community composting station that is maned and used better. Better recycling (more separation of materials). Childhood education on the environment and gardening. Removal of lawns, replacing them with things like clover.
- Solar and water access
- Unsure the water district management need improved
- Do not have a lot of problems because they fix a lot of springs/dams. Fix the water mains. Money is an issue.
- Outreach programs to youth. Environmental equity programs
- Solar panels
- Education of renewable energy solar panels etc.
- Flooding of the properties
- Transition to green jobs and for electric cars available charging stations, storage.
- Improvement of roads. The infrastructure is horrible. The lakes that surround her they are draining to support dairy farms and this should not be allowed.
- Expense cost of projects
- Nothing applies no water problems fueling stations important around I 10
- I think my local community should prioritize local garden.
- Schools to start with movement with that generation education and enlightening of impact, importance of protecting our future
- Recycling
- Forest service thinning project
- Should improve infrastructure.
- Gardening places, New Mexico clean water

- Get more solar panels
- Recycling of grocery plastic bags and recycling of glass
- Solar panels
- The solar power companies
- Getting better air quality
- Help with buying electric vehicles, more charging stations. / rebuilding together Sandoval county
- Streets
- Waste reduction/ water treatment/ ...
- More electric vehicles to get rid of pollution and make more affordable and incentives from the government to make them affordable. Recycling for plastic bags
- Community solar, ed charging stations and retrofitting of older facilities
- Education programs in community and in schools
- There is a lot to do and there is no political will to get it done.
- Increase transportation alternatives like more bike trails.
- Composting and recycling. Renewable energies. Mandatory solar-ready homes that are affordable. / better management of water. Transportation.
- Water quality
- Getting chargers in place
- Monitoring oil and gas productions more. Manufacturing and distribution hub.
- Individual homes need to be assessed. Grants giving individuals for home
- Everyone free home solar panels
- Keeping the air clean. And clean water
- Prioritize infrastructure for electric vehicles
- Solar powered energy efficient wind turbines and recycling waste management facilities. Littering compliance and help with low income utilities affecting environment.
- Recycling options
- Target rural areas for charging stations
- More reg on corporations
- Mines how to keep out
- Public transportation
- Love to have teaching environmental gardening, how to get rid of waste, and existing solar programs
- Needs pipes replaced
- New Mexico stewardship
- Waste management could be more robust
- Must begin with solar energy, mentioned a solar array.
- Make the county beautiful.
- They don't have ability to recycle, would like to be part of recycling initiatives
- The schools should be on solar. The big companies should be on solar and have more educational campaigns gearing more towards private and commercial.
- Residential solar main concern!!!
- Free solar for long term residents
- More solar
- Recycling materials we throw away everyday,
- Back roads, transportation all that more transit less cars our city isn't that big
- Support local farmers
- School education
- Wants the grants to be used for what they are supposed to be used for monitoring
- Pot holes
- All rural areas poverty effects green gases
- Weatherization grant is important
- Solar panels for creating renewable energy
- Don't like that the other state getting electric from New Mexico when it should be in state.
- People with less money should be helped
- Environment programs for school

- Reduce use of coal
- Mostly for the kids at school, anything that has to do with the kids at school and recreation.
- Expand solar facilities and opportunities
- Community transportation
- Again stop spraying skies & implement biodiversity & eliminate all large farms
- Waste water
- Tax rebates for green energy. If people could save they would be more interested.
- Make people aware of how much water they use.
- Transportation
- Research on different eco systems that you have for the state
- There should be more solar power
- Farms funding sustainable farming education on environmental rebates for energy
- To not pollute so much air with factories
- Water conservation, not planting non-native plants, increased use of heat pumps
- Educate kids in schools, once adults it is hard to change mind....build a power plant to handle capacity to electrify current things...increase the grid, new residential multi family for charging station...at odds to current housing policy...
- Clean up the land and planting trees.
- Support the reduction grants and do it expeditiously
- EPA should make it easier for school districts to take advantage of grants for electric school busses.
- Animal protection
- Helping homeless. Air quality
- Smart transportation program
- Weed need more composting like the city of San Francisco
- More access for clean water and water pollution in general, a lot of residents don't have running water at all and the quality of the water is low. The land stewardship programs, a sewage plant instead of the way the current sewage system is set up
- Class education
- Improving peoples homes to reduce waste, to use less fossil fuels. Build more solar wind or nuclear things that will actually provide energy in a clean way.
- We need more business and trying to create incentives for business development.
- Solar energy colleges school
- Increasing high density infill. Home wide and housing trust
- Recycling programs and waste reduction
- The sunrise movement should have more input on climate issues. The 3 sisters collective should be prioritized regarding land stewardship.
- Incentives towards building cleaner energy help with low income housing
- Hydrogen engines
- Walkable cities walkable, public transportation non gas,
- Plastic reduction project. Would like to see more glass, less plastic.
- Renewal energy.
- Less car and truck pollution up the mountain. Smoke and fire awareness
- Grant for 1 billion to remove CHFP (refrigerate) and create ozone at the same time.
- Solar panel initiative in nm for commercial and residential properties. / arborists foundation
- Recycle and renewal, especially in agriculture
- To help originations
- Areas that have ocean new technology to get energy from all the waves!!!
- Flooding resources
- Invest money in entrepreneurs have business in alt.packaging (biodegradable) vs. Plastics
- Waste management and recycling programs improvement. Co-2 capture improvements
- Ride sharing
- More wind turbines and more solar panels.
- Information on electric vehicles
- Air quality

- Battery back power for homes
- Affordable transportation, update electrical systems and weatherization
- Recycling, afterschool programs for children, communication and awareness in schools, supporting sustainable farmers education, supporting co ops in community, cooperative banks/credit unions, protection of wildlife/endangered species, hemp education
- Teaching people not be junk collectors
- Community involvement in the planning makes it easier to agree
- Solar commercial new bills projects
- Recycling programs
- Measurement enforcement methane
- Environments, transportation
- Education
- Less use of vehicles...make it so a car does not have to be used
- Have more youth activities
- More rain water catch plans or flow plans
- The shortage of water, we need more water
- Diesel needs to go away building houses
- More trees planted and greenery planted less rocks cant sacrifice renewable oxygen from our plants help for low income to have the ability to grow plants
- Would like to restore the waters ways and remove some pf the old dam that are blocking water form coming in, more incentive for green energy. And educating people have incentive ad program that would put people in green energy jobs
- Ones that will take care of the people as a whole.
- More education in school and more volunteer opportunities
- Collecting food waste and turning it into compost -- optional use as fertilizer for individuals' gardens
- Everyone should be made aware
- No real idea, educate people on how to grow on food, community building.
- More public transit to travel from city.
- Existing solar farms should be prioritized
- None / green initiatives like solar panels
- Upgrade existing electrical grid.
- Solar panels and light poles
- Need to put effort into cleaning up forest and reducing fuels and try to get more communities involved in programs that will help improve the health and safety of forest and wildlife and grants toward state forest agency.
- Giving money back to the people because we are overtaxed and waste too much on the wrong incentives
- Northern New Mexico college El Rito campus needs to be supported by the state to develop clean energy programs, specifically cleaning ground water. Green vehicles for the campus as well.
- More cross communication between states who have already implemented these programs, more collaboration
- Education is huge. Some people think it is a hoax. Getting people to believe it.
- Whatever we can do to have adequate water resources better transportation improving roads.
- We need to be pouring resources into solar for low community residents of the state
- Making more access to recycling of hazardous waste for county residents
- Law of rent being raised
- Think the waste management
- Emissions old cars
- Educating people more about energy for the environment
- Water quality and availability and public transport
- Drug habits of the people.
- Address at the local level to start with then work on the bigger stuff
- More green solutions
- Need rail network

- Need to do more education on recycling a lot of people need to know what goes in to recycle. Set something on tv to show what goes in recycle.
- Infrastructure, renewable energy,
- We need a recycle program
- Not sold on transfer of everything being electric no other idea
- Solar panels and public transit improvements
- Healthy soil
- Reduce fossil fuels use and reduce impact of years of use and educate people there is actual damage...try and reduce waste and use environmentally friendly products
- Supportive any and all annuitizes that help us improve the conditions in dealing with climate change that affect us all
- Weather
- Solar power and wind turbines recycling New Mexico film sites to reuse their film
- Reduce waste with green waste can. And housing crisis.
- Clean water recycling and composting making use of our waste
- Solar, emmissions control.
- Start laying down solar panels and switch to solar.
- Low emissions
- State wide city wide programs
- As a state there are several other more important issues that are in need instead of buying electric school busses, ex: kids in state, low test scores, drug addiction, etc. Etc.
- Just clean up in general renewable energy, do something about the homeless population give everyone access to water.
- We need help putting up solar panels for homes. Electric is killing us. We also need help with our roads and bridges. We need more jobs. We have too many abandoned homes that are condemned.
- Energy is the most important
- Winterization
- Replacing fossil fuels, increasing solar and wind
- Transition from fossil fuels to clean energy
- Supporting the farmers & getting water rights for them
- The hermits peak water shut alliance, education and awareness programs
- Home electrification/vehicle
- More education on recycling and other environmental issues
- Charging stations evs more off the main roads.
- Making safe isolated bike, scooter and walking routes .
- Start teaching children in elementary schools to respect nature and environment. Teach them how to grow their own good, etc.
- Help train individuals to get green jobs and grants directly to home owners for solar and wind turbines
- Education
- Composing
- More research for hydrogen fueled vehicles
- Solar for residential homes
- Recycling not doing their part
- Don't have any but they are doing it wrong I don't support the energy plan.
- Alternative energy
- Solar energy efficiency
- All good ideas but the lack of follow through isn't great keep the community better informed
- Make really good deals to for people to afford this and they cant get it!!!! The cost is a problem we are not rich!!!!
- Likes the idea of weatherization and lower income areas and flood control.
- I think they need to start with community ! Pick up trash and recycle programs and that she sees that they are doing any recycling and need to do better
- Having input with indigenous community
- Pollution especially during the summer, having monitors to be able to tell the levels of carbon monoxide so that they can find the areas that are most effected by said pollution.

- Transportation
- Water preservation make sure we aren't wasting water, use fresh water.
- To fix pollution
- Everything will help health, economy, all the way around....off of oil and gas and coal
- Air could be cleaner
- We need initiatives
- Homeless public transportation
- Hope they can get more water here in lower the water fees .
- Preservation of indigenous initiatives
- Infrastructure
- New Mexico climate justice
- Residential solar for all
- Create more forests is very important
- Pollution is the biggest challenge because of big corporations/poor forest management
- Weatherization programs expanded
- Waste management stewardship programs
- Need more recycling
- Recycling center has not been open since covid.
- Community composting
- Solar programs through out the state
- Local incentives
- More recycling of glass and greens, mulch
- Recycling program
- Better education, incentives for companies to go green.
- Maybe increase charging stations across the state renewable energy
- Retired people not being able to pay
- A lot more use of solar energy in residential and commercial areas and use of electric bikes programs
- Community clean up project
- Public transits access to transit
- Improve recycling programs including curbside pickup additional funding illegal dumping and clean up
- Child education low income housing cuidar los niños
- Resiclar y ahorro de agua
- PNM move to nuclear energy
- Generación de energía limpia
- Implement more water on the state
- Silver roofing, affordable housing ,hydro station for cleaner transportation and making it affordable for low income, refillable plastics like for shampoos, laundry detergents
- Focus on natural greeneries and plant more trees
- Transporte publico
- Carry initiatives in schools
- Should think for educations on greens
- Clean overflow water with trash, garbage pick, place for people to throw there garbage away.
- Education and stewarding of land, ins and outs of requiring land and maintaining it
- Campanas hacia la poblacion para la contaminacion
- I think to be care full with electric vehicle massive road waves hit by cars infrastructure with vehicles, developing a different way
- Regenerative farming or agriculture

Data Tables

For each of the following proposed actions and initiatives that could be part of the Climate Action Plan for your community, please indicate your level of support: **Clean I-40 Tradeport Corridor**

	Age							Gender			Race						Mode		
	Total	18-24	25-34	35-44	45-54	55-64	65+	Man	Wom-an	Non-binary/other	Hispan-ic	White	Native	Black	Asian/PI	Multi-racial	Other	Online	Phone
Base	1670	104 6%	147 9%	180 11%	179 11%	268 16%	786 47%	648 39%	1000 60%	16 1%	679 41%	758 45%	127 8%	26 2%	19 1%	20 1%	11 1%	441 26%	1229 74%
1 - Not supportive	218 13%	22 21%	29 20%	27 15%	31 17%	29 11%	79 10%	96 15%	116 12%	5 31%	102 15%	88 12%	15 12%	2 8%	1 5%	5 25%	3 27%	75 17%	143 12%
2	95 6%	4 4%	9 6%	14 8%	9 5%	12 4%	47 6%	37 6%	58 6%	0 0%	38 6%	46 6%	8 6%	1 4%	1 5%	0 0%	1 9%	20 5%	75 6%
3	294 18%	19 18%	32 22%	36 20%	35 20%	50 19%	122 16%	111 17%	180 18%	3 19%	123 18%	122 16%	32 25%	4 15%	3 16%	2 10%	0 0%	54 12%	240 20%
4	343 21%	23 22%	32 22%	44 24%	38 21%	50 19%	156 20%	134 21%	205 21%	4 25%	137 20%	152 20%	29 23%	7 27%	5 26%	6 30%	1 9%	90 20%	253 21%
5 - Very supportive	700 42%	32 31%	41 28%	57 32%	64 36%	127 47%	378 48%	267 41%	428 43%	4 25%	276 41%	342 45%	40 31%	12 46%	8 42%	6 30%	6 55%	182 41%	518 42%
Unsure	20 1%	4 4%	4 3%	2 1%	2 1%	0 0%	4 1%	3 0%	13 1%	0 0%	3 0%	8 1%	3 2%	0 0%	1 5%	1 5%	0 0%	20 5%	0 0%

For each of the following proposed actions and initiatives that could be part of the Climate Action Plan for your community, please indicate your level of support: **Clean I-40 Tradeport Corridor**

	Region						County Type			How concerned are you about the impact of climate change in your community?				Aware of CPRG		
	Total	ABQ Metro	NW	North Central	Las Cruces/SW	Eastern	Urban	Rural	Frontier	Very concerned	Some-what concerned	Not very concerned	Not concerned at all	Yes	No	Unsure
Base	1670	641	193	405	269	141	899	496	254	1121	336	99	107	491	1088	91
		38%	12%	24%	16%	8%	54%	30%	15%	67%	20%	6%	6%	29%	65%	5%
1 - Not supportive	218	95	16	50	37	16	126	56	32	108	22	30	57	82	128	8
	13%	15%	8%	12%	14%	11%	14%	11%	13%	10%	7%	30%	53%	17%	12%	9%
2	95	35	6	30	15	9	50	25	20	39	28	18	10	25	67	3
	6%	5%	3%	7%	6%	6%	6%	5%	8%	3%	8%	18%	9%	5%	6%	3%
3	294	100	46	50	61	34	137	94	60	147	101	29	16	62	219	13
	18%	16%	24%	12%	23%	24%	15%	19%	24%	13%	30%	29%	15%	13%	20%	14%
4	343	138	51	81	46	25	180	109	52	237	92	8	6	96	225	22
	21%	22%	26%	20%	17%	18%	20%	22%	20%	21%	27%	8%	6%	20%	21%	24%
5 - Very supportive	700	265	74	188	110	57	395	210	89	574	93	14	18	216	446	38
	42%	41%	38%	46%	41%	40%	44%	42%	35%	51%	28%	14%	17%	44%	41%	42%
Unsure	20	8	0	6	0	0	11	2	1	16	0	0	0	10	3	7
	1%	1%	0%	1%	0%	0%	1%	0%	0%	1%	0%	0%	0%	2%	0%	8%

For each of the following proposed actions and initiatives that could be part of the Climate Action Plan for your community, please indicate your level of support: **Efficient & Clean Operations for Schools (ECO Schools) program**

	Age							Gender			Race						Mode		
	Total	18-24	25-34	35-44	45-54	55-64	65+	Man	Wom- an	Non- binary/ other	Hispan- ic	White	Native	Black	Asian/ PI	Multi- racial	Other	Online	Phone
Base	1670	104 6%	147 9%	180 11%	179 11%	268 16%	786 47%	648 39%	1000 60%	16 1%	679 41%	758 45%	127 8%	26 2%	19 1%	20 1%	11 1%	441 26%	1229 74%
1 - Not supportive	186 11%	4 4%	15 10%	19 11%	30 17%	33 12%	85 11%	88 14%	97 10%	1 6%	101 15%	69 9%	7 6%	3 12%	0 0%	2 10%	3 27%	21 5%	165 13%
2	94 6%	9 9%	9 6%	12 7%	12 7%	17 6%	35 4%	41 6%	52 5%	1 6%	40 6%	37 5%	14 11%	0 0%	1 5%	2 10%	0 0%	17 4%	77 6%
3	198 12%	11 11%	22 15%	17 9%	15 8%	37 14%	96 12%	76 12%	120 12%	2 13%	93 14%	75 10%	20 16%	4 15%	3 16%	0 0%	0 0%	34 8%	164 13%
4	274 16%	23 22%	27 18%	35 19%	35 20%	34 13%	120 15%	110 17%	162 16%	2 13%	112 16%	119 16%	23 18%	2 8%	3 16%	5 25%	2 18%	72 16%	202 16%
5 - Very supportive	905 54%	55 53%	71 48%	95 53%	87 49%	147 55%	448 57%	330 51%	563 56%	10 63%	331 49%	455 60%	60 47%	17 65%	11 58%	11 55%	6 55%	284 64%	621 51%
Unsure	13 1%	2 2%	3 2%	2 1%	0 0%	0 0%	2 0%	3 0%	6 1%	0 0%	2 0%	3 0%	3 2%	0 0%	1 5%	0 0%	0 0%	13 3%	0 0%

For each of the following proposed actions and initiatives that could be part of the Climate Action Plan for your community, please indicate your level of support: **Efficient & Clean Operations for Schools (ECO Schools) program**

	Region						County Type			How concerned are you about the impact of climate change in your community?				Aware of CPRG		
	Total	ABQ Metro	NW	North Central	Las Cruces/SW	Eastern	Urban	Rural	Frontier	Very concerned	Some-what concerned	Not very concerned	Not concerned at all	Yes	No	Unsure
Base	1670	641 38%	193 12%	405 24%	269 16%	141 8%	899 54%	496 30%	254 15%	1121 67%	336 20%	99 6%	107 6%	491 29%	1088 65%	91 5%
1 - Not supportive	186 11%	72 11%	15 8%	40 10%	31 12%	26 18%	83 9%	56 11%	45 18%	53 5%	34 10%	40 40%	58 54%	47 10%	137 13%	2 2%
2	94 6%	41 6%	15 8%	21 5%	12 4%	5 4%	44 5%	28 6%	22 9%	39 3%	31 9%	13 13%	10 9%	26 5%	64 6%	4 4%
3	198 12%	65 10%	29 15%	35 9%	44 16%	24 17%	88 10%	72 15%	37 15%	98 9%	74 22%	15 15%	11 10%	40 8%	151 14%	7 8%
4	274 16%	106 17%	33 17%	67 17%	48 18%	20 14%	147 16%	84 17%	43 17%	168 15%	85 25%	12 12%	7 7%	70 14%	183 17%	21 23%
5 - Very supportive	905 54%	353 55%	100 52%	240 59%	134 50%	66 47%	532 59%	255 51%	106 42%	753 67%	112 33%	19 19%	21 20%	303 62%	550 51%	52 57%
Unsure	13 1%	4 1%	1 1%	2 0%	0 0%	0 0%	5 1%	1 0%	1 0%	10 1%	0 0%	0 0%	0 0%	5 1%	3 0%	5 5%

For each of the following proposed actions and initiatives that could be part of the Climate Action Plan for your community, please indicate your level of support: **Medium- and Heavy-Duty (MHD) Zero Emissions Truck (ZET) Incentive Program**

	Age							Gender			Race						Mode		
	Total	18-24	25-34	35-44	45-54	55-64	65+	Man	Woman	Non-binary/other	Hispanic	White	Native	Black	Asian/PI	Multi-racial	Other	Online	Phone
Base	1670	104 6%	147 9%	180 11%	179 11%	268 16%	786 47%	648 39%	1000 60%	16 1%	679 41%	758 45%	127 8%	26 2%	19 1%	20 1%	11 1%	441 26%	1229 74%
1 - Not supportive	191 11%	12 12%	17 12%	23 13%	31 17%	31 12%	77 10%	91 14%	98 10%	2 13%	103 15%	68 9%	10 8%	3 12%	0 0%	3 15%	2 18%	37 8%	154 13%
2	99 6%	16 15%	6 4%	6 3%	9 5%	16 6%	45 6%	44 7%	53 5%	1 6%	32 5%	44 6%	18 14%	0 0%	1 5%	1 5%	0 0%	27 6%	72 6%
3	268 16%	22 21%	34 23%	28 16%	33 18%	46 17%	105 13%	94 15%	172 17%	2 13%	119 18%	100 13%	29 23%	7 27%	5 26%	2 10%	3 27%	64 15%	204 17%
4	328 20%	20 19%	34 23%	37 21%	32 18%	42 16%	163 21%	138 21%	186 19%	4 25%	125 18%	162 21%	23 18%	4 15%	3 16%	3 15%	1 9%	80 18%	248 20%
5 - Very supportive	761 46%	29 28%	52 35%	84 47%	73 41%	131 49%	391 50%	276 43%	477 48%	7 44%	294 43%	376 50%	43 34%	12 46%	9 47%	11 55%	5 45%	210 48%	551 45%
Unsure	23 1%	5 5%	4 3%	2 1%	1 1%	2 1%	5 1%	5 1%	14 1%	0 0%	6 1%	8 1%	4 3%	0 0%	1 5%	0 0%	0 0%	23 5%	0 0%

For each of the following proposed actions and initiatives that could be part of the Climate Action Plan for your community, please indicate your level of support: **Medium- and Heavy-Duty (MHD) Zero Emissions Truck (ZET) Incentive Program**

	Region						County Type			How concerned are you about the impact of climate change in your community?				Aware of CPRG		
	Total	ABQ Metro	NW	North Central	Las Cruces/SW	Eastern	Urban	Rural	Frontier	Very concerned	Some-what concerned	Not very concerned	Not concerned at all	Yes	No	Unsure
Base	1670	641 38%	193 12%	405 24%	269 16%	141 8%	899 54%	496 30%	254 15%	1121 67%	336 20%	99 6%	107 6%	491 29%	1088 65%	91 5%
1 - Not supportive	191 11%	82 13%	15 8%	37 9%	30 11%	25 18%	96 11%	55 11%	38 15%	55 5%	34 10%	39 39%	62 58%	52 11%	133 12%	6 7%
2	99 6%	38 6%	13 7%	26 6%	14 5%	6 4%	46 5%	34 7%	17 7%	55 5%	26 8%	9 9%	9 8%	24 5%	70 6%	5 5%
3	268 16%	101 16%	45 23%	55 14%	47 17%	20 14%	133 15%	88 18%	47 19%	138 12%	90 27%	23 23%	16 15%	60 12%	194 18%	14 15%
4	328 20%	121 19%	41 21%	75 19%	55 20%	32 23%	173 19%	101 20%	50 20%	222 20%	88 26%	10 10%	7 7%	93 19%	211 19%	24 26%
5 - Very supportive	761 46%	293 46%	77 40%	206 51%	122 45%	56 40%	440 49%	215 43%	99 39%	633 56%	97 29%	18 18%	13 12%	252 51%	474 44%	35 38%
Unsure	23 1%	6 1%	2 1%	6 1%	1 0%	2 1%	11 1%	3 1%	3 1%	18 2%	1 0%	0 0%	0 0%	10 2%	6 1%	7 8%

For each of the following proposed actions and initiatives that could be part of the Climate Action Plan for your community, please indicate your level of support: **Community Mobility Program**

	Age							Gender			Race						Mode		
	Total	18-24	25-34	35-44	45-54	55-64	65+	Man	Woman	Non-binary/other	Hispanic	White	Native	Black	Asian/PI	Multi-racial	Other	Online	Phone
Base	1670	104 6%	147 9%	180 11%	179 11%	268 16%	786 47%	648 39%	1000 60%	16 1%	679 41%	758 45%	127 8%	26 2%	19 1%	20 1%	11 1%	441 26%	1229 74%
1 - Not supportive	131 8%	3 3%	9 6%	14 8%	22 12%	20 7%	63 8%	69 11%	61 6%	1 6%	72 11%	49 6%	4 3%	2 8%	0 0%	1 5%	2 18%	14 3%	117 10%
2	60 4%	6 6%	7 5%	8 4%	8 4%	9 3%	22 3%	33 5%	27 3%	0 0%	24 4%	26 3%	9 7%	0 0%	1 5%	0 0%	0 0%	11 2%	49 4%
3	217 13%	15 14%	24 16%	18 10%	22 12%	43 16%	95 12%	87 13%	129 13%	1 6%	102 15%	71 9%	29 23%	5 19%	2 11%	1 5%	2 18%	36 8%	181 15%
4	268 16%	17 16%	21 14%	36 20%	29 16%	36 13%	129 16%	111 17%	156 16%	1 6%	119 18%	111 15%	26 20%	4 15%	2 11%	3 15%	1 9%	57 13%	211 17%
5 - Very supportive	984 59%	63 61%	82 56%	102 57%	98 55%	160 60%	477 61%	346 53%	623 62%	13 81%	360 53%	499 66%	58 46%	15 58%	13 68%	15 75%	6 55%	313 71%	671 55%
Unsure	10 1%	0 0%	4 3%	2 1%	0 0%	0 0%	0 0%	2 0%	4 0%	0 0%	2 0%	2 0%	1 1%	0 0%	1 5%	0 0%	0 0%	10 2%	0 0%

For each of the following proposed actions and initiatives that could be part of the Climate Action Plan for your community, please indicate your level of support: **Community Mobility Program**

	Region						County Type			How concerned are you about the impact of climate change in your community?				Aware of CPRG		
	Total	ABQ Metro	NW	North Central	Las Cruces/SW	Eastern	Urban	Rural	Frontier	Very concerned	Some-what concerned	Not very concerned	Not concerned at all	Yes	No	Unsure
Base	1670	641 38%	193 12%	405 24%	269 16%	141 8%	899 54%	496 30%	254 15%	1121 67%	336 20%	99 6%	107 6%	491 29%	1088 65%	91 5%
1 - Not supportive	131 8%	61 10%	9 5%	22 5%	25 9%	13 9%	67 7%	39 8%	24 9%	32 3%	19 6%	26 26%	53 50%	35 7%	95 9%	1 1%
2	60 4%	20 3%	10 5%	13 3%	13 5%	4 3%	21 2%	24 5%	15 6%	16 1%	20 6%	15 15%	9 8%	17 3%	41 4%	2 2%
3	217 13%	77 12%	31 16%	43 11%	40 15%	25 18%	92 10%	68 14%	56 22%	92 8%	78 23%	26 26%	20 19%	44 9%	163 15%	10 11%
4	268 16%	95 15%	48 25%	53 13%	46 17%	26 18%	135 15%	93 19%	40 16%	155 14%	87 26%	13 13%	11 10%	58 12%	193 18%	17 19%
5 - Very supportive	984 59%	385 60%	95 49%	273 67%	145 54%	73 52%	580 65%	272 55%	119 47%	819 73%	132 39%	19 19%	14 13%	334 68%	593 55%	57 63%
Unsure	10 1%	3 0%	0 0%	1 0%	0 0%	0 0%	4 0%	0 0%	0 0%	7 1%	0 0%	0 0%	0 0%	3 1%	3 0%	4 4%

For each of the following proposed actions and initiatives that could be part of the Climate Action Plan for your community, please indicate your level of support: **Implementation of NM methane waste rule and ozone precursor rule**

	Age							Gender			Race						Mode		
	Total	18-24	25-34	35-44	45-54	55-64	65+	Man	Woman	Non-binary/other	Hispanic	White	Native	Black	Asian/PI	Multi-racial	Other	Online	Phone
Base	1668	104 6%	147 9%	179 11%	179 11%	268 16%	785 47%	648 39%	998 60%	16 1%	679 41%	757 45%	127 8%	26 2%	19 1%	20 1%	11 1%	439 26%	1229 74%
1 - Not supportive	139 8%	6 6%	10 7%	14 8%	20 11%	20 7%	69 9%	69 11%	70 7%	0 0%	75 11%	49 6%	6 5%	3 12%	2 11%	1 5%	2 18%	18 4%	121 10%
2	86 5%	4 4%	14 10%	11 6%	12 7%	16 6%	29 4%	40 6%	43 4%	3 19%	44 6%	31 4%	8 6%	0 0%	1 5%	1 5%	0 0%	9 2%	77 6%
3	244 15%	14 13%	19 13%	31 17%	40 22%	40 15%	100 13%	114 18%	130 13%	0 0%	122 18%	87 11%	23 18%	3 12%	1 5%	0 0%	0 0%	30 7%	214 17%
4	283 17%	19 18%	42 29%	32 18%	26 15%	36 13%	127 16%	103 16%	177 18%	2 13%	125 18%	111 15%	26 20%	7 27%	4 21%	4 20%	3 27%	60 14%	223 18%
5 - Very supportive	892 53%	54 52%	59 40%	88 49%	80 45%	152 57%	458 58%	316 49%	565 57%	10 63%	306 45%	472 62%	59 46%	13 50%	10 53%	14 70%	6 55%	298 68%	594 48%
Unsure	24 1%	7 7%	3 2%	3 2%	1 1%	4 1%	2 0%	6 1%	13 1%	1 6%	7 1%	7 1%	5 4%	0 0%	1 5%	0 0%	0 0%	24 5%	0 0%

For each of the following proposed actions and initiatives that could be part of the Climate Action Plan for your community, please indicate your level of support: **Implementation of NM methane waste rule and ozone precursor rule**

	Region						County Type			How concerned are you about the impact of climate change in your community?				Aware of CPRG		
	Total	ABQ Metro	NW	North Central	Las Cruces/SW	Eastern	Urban	Rural	Frontier	Very concerned	Some-what concerned	Not very concerned	Not concerned at all	Yes	No	Unsure
Base	1668	641 38%	193 12%	404 24%	268 16%	141 8%	898 54%	496 30%	253 15%	1119 67%	336 20%	99 6%	107 6%	489 29%	1088 65%	91 5%
1 - Not supportive	139 8%	54 8%	13 7%	27 7%	29 11%	14 10%	72 8%	42 8%	23 9%	38 3%	15 4%	30 30%	55 51%	35 7%	103 9%	1 1%
2	86 5%	33 5%	11 6%	20 5%	12 4%	10 7%	36 4%	34 7%	16 6%	24 2%	31 9%	21 21%	10 9%	19 4%	65 6%	2 2%
3	244 15%	87 14%	29 15%	54 13%	47 18%	26 18%	113 13%	76 15%	54 21%	124 11%	88 26%	15 15%	17 16%	48 10%	188 17%	8 9%
4	283 17%	114 18%	36 19%	63 16%	44 16%	23 16%	151 17%	87 18%	42 17%	168 15%	92 27%	11 11%	11 10%	78 16%	193 18%	12 13%
5 - Very supportive	892 53%	347 54%	100 52%	235 58%	133 50%	68 48%	515 57%	252 51%	116 46%	749 67%	107 32%	22 22%	14 13%	302 62%	529 49%	61 67%
Unsure	24 1%	6 1%	4 2%	5 1%	3 1%	0 0%	11 1%	5 1%	2 1%	16 1%	3 1%	0 0%	0 0%	7 1%	10 1%	7 8%

For each of the following proposed actions and initiatives that could be part of the Climate Action Plan for your community, please indicate your level of support: **Support access to energy efficiency, retrofit, and adoption of home electrification technologies and appliances (i.e. heat pumps) for low-income New Mexicans**

	Age							Gender			Race						Mode		
	Total	18-24	25-34	35-44	45-54	55-64	65+	Man	Woman	Non-binary/other	Hispanic	White	Native	Black	Asian/PI	Multi-racial	Other	Online	Phone
Base	1670	104 6%	147 9%	180 11%	179 11%	268 16%	786 47%	648 39%	1000 60%	16 1%	679 41%	758 45%	127 8%	26 2%	19 1%	20 1%	11 1%	441 26%	1229 74%
1 - Not supportive	112 7%	3 3%	10 7%	12 7%	15 8%	17 6%	55 7%	54 8%	58 6%	0 0%	58 9%	45 6%	3 2%	2 8%	0 0%	2 10%	2 18%	16 4%	96 8%
2	47 3%	5 5%	5 3%	3 2%	9 5%	5 2%	20 3%	25 4%	22 2%	0 0%	21 3%	18 2%	7 6%	1 4%	0 0%	0 0%	0 0%	7 2%	40 3%
3	132 8%	8 8%	14 10%	12 7%	16 9%	24 9%	58 7%	61 9%	70 7%	1 6%	73 11%	40 5%	11 9%	3 12%	1 5%	2 10%	0 0%	24 5%	108 9%
4	240 14%	23 22%	19 13%	29 16%	31 17%	30 11%	107 14%	96 15%	142 14%	1 6%	95 14%	101 13%	24 19%	5 19%	1 5%	4 20%	1 9%	61 14%	179 15%
5 - Very supportive	1125 67%	64 62%	95 65%	121 67%	108 60%	190 71%	546 69%	409 63%	701 70%	14 88%	431 63%	550 73%	79 62%	15 58%	16 84%	11 55%	8 73%	319 72%	806 66%
Unsure	14 1%	1 1%	4 3%	3 2%	0 0%	2 1%	0 0%	3 0%	7 1%	0 0%	1 0%	4 1%	3 2%	0 0%	1 5%	1 5%	0 0%	14 3%	0 0%

For each of the following proposed actions and initiatives that could be part of the Climate Action Plan for your community, please indicate your level of support: **Support access to energy efficiency, retrofit, and adoption of home electrification technologies and appliances (i.e. heat pumps) for low-income New Mexicans**

	Region						County Type			How concerned are you about the impact of climate change in your community?				Aware of CPRG		
	Total	ABQ Metro	NW	North Central	Las Cruces/SW	Eastern	Urban	Rural	Frontier	Very concerned	Some-what concerned	Not very concerned	Not concerned at all	Yes	No	Unsure
Base	1670	641 38%	193 12%	405 24%	269 16%	141 8%	899 54%	496 30%	254 15%	1121 67%	336 20%	99 6%	107 6%	491 29%	1088 65%	91 5%
1 - Not supportive	112 7%	47 7%	9 5%	19 5%	22 8%	14 10%	55 6%	34 7%	22 9%	29 3%	19 6%	23 23%	40 37%	28 6%	83 8%	1 1%
2	47 3%	13 2%	9 5%	12 3%	8 3%	5 4%	19 2%	19 4%	9 4%	15 1%	16 5%	7 7%	9 8%	8 2%	38 3%	1 1%
3	132 8%	48 7%	17 9%	19 5%	36 13%	12 9%	64 7%	42 8%	26 10%	59 5%	40 12%	15 15%	18 17%	30 6%	96 9%	6 7%
4	240 14%	103 16%	37 19%	50 12%	34 13%	15 11%	127 14%	76 15%	36 14%	133 12%	73 22%	18 18%	14 13%	54 11%	172 16%	14 15%
5 - Very supportive	1125 67%	426 66%	120 62%	302 75%	169 63%	95 67%	627 70%	324 65%	161 63%	877 78%	187 56%	35 35%	26 24%	367 75%	694 64%	64 70%
Unsure	14 1%	4 1%	1 1%	3 1%	0 0%	0 0%	7 1%	1 0%	0 0%	8 1%	1 0%	1 1%	0 0%	4 1%	5 0%	5 5%

For each of the following proposed actions and initiatives that could be part of the Climate Action Plan for your community, please indicate your level of support: **Expand Community Energy Efficiency Development (CEED) Block Grant**

	Age							Gender			Race						Mode		
	Total	18-24	25-34	35-44	45-54	55-64	65+	Man	Woman	Non-binary/other	Hispanic	White	Native	Black	Asian/PI	Multi-racial	Other	Online	Phone
Base	1670	104 6%	147 9%	180 11%	179 11%	268 16%	786 47%	648 39%	1000 60%	16 1%	679 41%	758 45%	127 8%	26 2%	19 1%	20 1%	11 1%	441 26%	1229 74%
1 - Not supportive	120 7%	5 5%	11 7%	10 6%	18 10%	17 6%	59 8%	65 10%	55 6%	0 0%	63 9%	47 6%	4 3%	3 12%	0 0%	1 5%	2 18%	13 3%	107 9%
2	63 4%	4 4%	9 6%	8 4%	6 3%	10 4%	26 3%	24 4%	38 4%	1 6%	29 4%	23 3%	7 6%	2 8%	0 0%	1 5%	0 0%	10 2%	53 4%
3	261 16%	18 17%	22 15%	30 17%	35 20%	35 13%	121 15%	109 17%	149 15%	3 19%	132 19%	89 12%	26 20%	5 19%	4 21%	1 5%	0 0%	37 8%	224 18%
4	331 20%	21 20%	38 26%	36 20%	29 16%	50 19%	157 20%	126 19%	204 20%	1 6%	144 21%	148 20%	22 17%	3 12%	3 16%	3 15%	3 27%	76 17%	255 21%
5 - Very supportive	875 52%	53 51%	63 43%	92 51%	90 50%	153 57%	422 54%	320 49%	543 54%	10 63%	306 45%	445 59%	65 51%	13 50%	11 58%	14 70%	5 45%	285 65%	590 48%
Unsure	20 1%	3 3%	4 3%	4 2%	1 1%	3 1%	1 0%	4 1%	11 1%	1 6%	5 1%	6 1%	3 2%	0 0%	1 5%	0 0%	1 9%	20 5%	0 0%

For each of the following proposed actions and initiatives that could be part of the Climate Action Plan for your community, please indicate your level of support: **Expand Community Energy Efficiency Development (CEED) Block Grant**

	Region						County Type			How concerned are you about the impact of climate change in your community?				Aware of CPRG		
	Total	ABQ Metro	NW	North Central	Las Cruces/SW	Eastern	Urban	Rural	Frontier	Very concerned	Some-what concerned	Not very concerned	Not concerned at all	Yes	No	Unsure
Base	1670	641 38%	193 12%	405 24%	269 16%	141 8%	899 54%	496 30%	254 15%	1121 67%	336 20%	99 6%	107 6%	491 29%	1088 65%	91 5%
1 - Not supportive	120 7%	51 8%	11 6%	20 5%	21 8%	16 11%	60 7%	36 7%	23 9%	30 3%	17 5%	26 26%	46 43%	32 7%	87 8%	1 1%
2	63 4%	25 4%	8 4%	11 3%	14 5%	5 4%	27 3%	24 5%	12 5%	15 1%	23 7%	11 11%	14 13%	12 2%	49 5%	2 2%
3	261 16%	94 15%	34 18%	58 14%	47 17%	27 19%	123 14%	91 18%	46 18%	124 11%	89 26%	26 26%	21 20%	52 11%	199 18%	10 11%
4	331 20%	137 21%	40 21%	77 19%	53 20%	24 17%	187 21%	96 19%	48 19%	216 19%	91 27%	12 12%	11 10%	76 15%	237 22%	18 20%
5 - Very supportive	875 52%	327 51%	100 52%	234 58%	133 49%	68 48%	491 55%	247 50%	124 49%	722 64%	115 34%	23 23%	15 14%	312 64%	511 47%	52 57%
Unsure	20 1%	7 1%	0 0%	5 1%	1 0%	1 1%	11 1%	2 0%	1 0%	14 1%	1 0%	1 1%	0 0%	7 1%	5 0%	8 9%

Please rank the above listed State priorities from 1-5 with 1 given highest priority and 5 least: **Clean I-40 Tradeport Corridor**

	Age							Gender			Race						Mode		
	Total	18-24	25-34	35-44	45-54	55-64	65+	Man	Woman	Non-binary/other	Hispanic	White	Native	Black	Asian/PI	Multi-racial	Other	Online	Phone
Base	1229	17 1%	96 8%	129 10%	142 12%	206 17%	639 52%	497 40%	730 59%	2 0%	606 49%	515 42%	64 5%	18 1%	11 1%	0 0%	0 0%	0 0%	1229 100%
1 - Highest priority	433 35%	5 29%	27 28%	37 29%	44 31%	63 31%	257 40%	178 36%	255 35%	0 0%	214 35%	179 35%	21 33%	8 44%	5 45%	0 0%	0 0%	0 0%	433 35%
2	175 14%	2 12%	22 23%	17 13%	21 15%	27 13%	86 13%	76 15%	99 14%	0 0%	76 13%	81 16%	15 23%	0 0%	0 0%	0 0%	0 0%	0 0%	175 14%
3	270 22%	5 29%	22 23%	29 22%	35 25%	53 26%	126 20%	101 20%	169 23%	0 0%	141 23%	105 20%	11 17%	6 33%	4 36%	0 0%	0 0%	0 0%	270 22%
4	127 10%	2 12%	7 7%	19 15%	14 10%	22 11%	63 10%	42 8%	84 12%	1 50%	60 10%	51 10%	10 16%	4 22%	0 0%	0 0%	0 0%	0 0%	127 10%
5 - Least priority	224 18%	3 18%	18 19%	27 21%	28 20%	41 20%	107 17%	100 20%	123 17%	1 50%	115 19%	99 19%	7 11%	0 0%	2 18%	0 0%	0 0%	0 0%	224 18%
Unsure	0 0%	0 0%	0 0%	0 0%	0 0%	0 0%	0 0%	0 0%	0 0%	0 0%	0 0%	0 0%	0 0%	0 0%	0 0%	0 0%	0 0%	0 0%	0 0%

Please rank the above listed State priorities from 1-5 with 1 given highest priority and 5 least: **Clean I-40 Tradeport Corridor**

	Region						County Type			How concerned are you about the impact of climate change in your community?				Aware of CPRG		
	Total	ABQ Metro	NW	North Central	Las Cruces/SW	Eastern	Urban	Rural	Frontier	Very concerned	Some-what concerned	Not very concerned	Not concerned at all	Yes	No	Unsure
Base	1229	471 38%	134 11%	260 21%	241 20%	123 10%	619 50%	396 32%	214 17%	742 60%	293 24%	93 8%	101 8%	270 22%	959 78%	0 0%
1 - Highest priority	433 35%	161 34%	52 39%	95 37%	81 34%	44 36%	219 35%	149 38%	65 30%	317 43%	75 26%	22 24%	19 19%	104 39%	329 34%	0 0%
2	175 14%	73 15%	19 14%	39 15%	32 13%	12 10%	94 15%	54 14%	27 13%	104 14%	54 18%	9 10%	8 8%	40 15%	135 14%	0 0%
3	270 22%	106 23%	23 17%	50 19%	65 27%	26 21%	141 23%	77 19%	52 24%	152 20%	87 30%	21 23%	10 10%	49 18%	221 23%	0 0%
4	127 10%	40 8%	16 12%	30 12%	25 10%	16 13%	64 10%	41 10%	22 10%	64 9%	39 13%	11 12%	13 13%	29 11%	98 10%	0 0%
5 - Least priority	224 18%	91 19%	24 18%	46 18%	38 16%	25 20%	101 16%	75 19%	48 22%	105 14%	38 13%	30 32%	51 50%	48 18%	176 18%	0 0%
Unsure	0 0%	0 0%	0 0%	0 0%	0 0%	0 0%	0 0%	0 0%	0 0%	0 0%	0 0%	0 0%	0 0%	0 0%	0 0%	0 0%

Please rank the above listed State priorities from 1-5 with 1 given highest priority and 5 least: **Efficient & Clean Operations for Schools (ECO Schools) program**

	Age							Gender			Race						Mode		
	Total	18-24	25-34	35-44	45-54	55-64	65+	Man	Wom- an	Non- binary/ other	Hispan- ic	White	Native	Black	Asian/ PI	Multi- racial	Other	Online	Phone
Base	1229	17 1%	96 8%	129 10%	142 12%	206 17%	639 52%	497 40%	730 59%	2 0%	606 49%	515 42%	64 5%	18 1%	11 1%	0 0%	0 0%	0 0%	1229 100%
1 - Highest priority	500 41%	5 29%	32 33%	50 39%	49 35%	82 40%	282 44%	186 37%	314 43%	0 0%	244 40%	216 42%	20 31%	7 39%	6 55%	0 0%	0 0%	0 0%	500 41%
2	202 16%	3 18%	17 18%	27 21%	27 19%	29 14%	99 15%	87 18%	115 16%	0 0%	83 14%	98 19%	13 20%	4 22%	2 18%	0 0%	0 0%	0 0%	202 16%
3	195 16%	4 24%	19 20%	19 15%	24 17%	31 15%	98 15%	76 15%	118 16%	1 50%	107 18%	71 14%	10 16%	1 6%	2 18%	0 0%	0 0%	0 0%	195 16%
4	113 9%	5 29%	11 11%	13 10%	12 8%	19 9%	53 8%	49 10%	64 9%	0 0%	64 11%	38 7%	9 14%	2 11%	0 0%	0 0%	0 0%	0 0%	113 9%
5 - Least priority	219 18%	0 0%	17 18%	20 16%	30 21%	45 22%	107 17%	99 20%	119 16%	1 50%	108 18%	92 18%	12 19%	4 22%	1 9%	0 0%	0 0%	0 0%	219 18%
Unsure	0 0%	0 0%	0 0%	0 0%	0 0%	0 0%	0 0%	0 0%	0 0%	0 0%	0 0%	0 0%	0 0%	0 0%	0 0%	0 0%	0 0%	0 0%	0 0%

Please rank the above listed State priorities from 1-5 with 1 given highest priority and 5 least: **Efficient & Clean Operations for Schools (ECO Schools) program**

	Region						County Type			How concerned are you about the impact of climate change in your community?				Aware of CPRG		
	Total	ABQ Metro	NW	North Central	Las Cruces/SW	Eastern	Urban	Rural	Frontier	Very concerned	Some-what concerned	Not very concerned	Not concerned at all	Yes	No	Unsure
Base	1229	471 38%	134 11%	260 21%	241 20%	123 10%	619 50%	396 32%	214 17%	742 60%	293 24%	93 8%	101 8%	270 22%	959 78%	0 0%
1 - Highest priority	500 41%	185 39%	55 41%	122 47%	92 38%	46 37%	263 42%	167 42%	70 33%	365 49%	92 31%	25 27%	18 18%	114 42%	386 40%	0 0%
2	202 16%	85 18%	19 14%	38 15%	46 19%	14 11%	115 19%	58 15%	29 14%	126 17%	59 20%	11 12%	6 6%	50 19%	152 16%	0 0%
3	195 16%	77 16%	24 18%	29 11%	41 17%	24 20%	83 13%	66 17%	46 21%	102 14%	62 21%	17 18%	14 14%	39 14%	156 16%	0 0%
4	113 9%	44 9%	13 10%	24 9%	23 10%	9 7%	56 9%	35 9%	22 10%	55 7%	41 14%	10 11%	7 7%	21 8%	92 10%	0 0%
5 - Least priority	219 18%	80 17%	23 17%	47 18%	39 16%	30 24%	102 16%	70 18%	47 22%	94 13%	39 13%	30 32%	56 55%	46 17%	173 18%	0 0%
Unsure	0 0%	0 0%	0 0%	0 0%	0 0%	0 0%	0 0%	0 0%	0 0%	0 0%	0 0%	0 0%	0 0%	0 0%	0 0%	0 0%

Please rank the above listed State priorities from 1-5 with 1 given highest priority and 5 least: **Medium- and Heavy-Duty (MHD) Zero Emissions Truck (ZET) Incentive Program**

	Age							Gender			Race						Mode		
	Total	18-24	25-34	35-44	45-54	55-64	65+	Man	Wom- an	Non- binary/ other	Hispan- ic	White	Native	Black	Asian/ PI	Multi- racial	Other	Online	Phone
Base	1229	17 1%	96 8%	129 10%	142 12%	206 17%	639 52%	497 40%	730 59%	2 0%	606 49%	515 42%	64 5%	18 1%	11 1%	0 0%	0 0%	0 0%	1229 100%
1 - Highest priority	393 32%	5 29%	17 18%	36 28%	40 28%	67 33%	228 36%	141 28%	252 35%	0 0%	202 33%	166 32%	12 19%	6 33%	2 18%	0 0%	0 0%	0 0%	393 32%
2	229 19%	0 0%	23 24%	31 24%	25 18%	38 18%	112 18%	94 19%	134 18%	1 50%	97 16%	110 21%	17 27%	2 11%	2 18%	0 0%	0 0%	0 0%	229 19%
3	248 20%	4 24%	18 19%	23 18%	31 22%	41 20%	131 21%	105 21%	143 20%	0 0%	137 23%	85 17%	12 19%	5 28%	3 27%	0 0%	0 0%	0 0%	248 20%
4	171 14%	3 18%	24 25%	21 16%	17 12%	29 14%	77 12%	71 14%	99 14%	1 50%	79 13%	73 14%	11 17%	5 28%	2 18%	0 0%	0 0%	0 0%	171 14%
5 - Least priority	188 15%	5 29%	14 15%	18 14%	29 20%	31 15%	91 14%	86 17%	102 14%	0 0%	91 15%	81 16%	12 19%	0 0%	2 18%	0 0%	0 0%	0 0%	188 15%
Unsure	0 0%	0 0%	0 0%	0 0%	0 0%	0 0%	0 0%	0 0%	0 0%	0 0%	0 0%	0 0%	0 0%	0 0%	0 0%	0 0%	0 0%	0 0%	0 0%

Please rank the above listed State priorities from 1-5 with 1 given highest priority and 5 least: **Medium- and Heavy-Duty (MHD) Zero Emissions Truck (ZET) Incentive Program**

	Region						County Type			How concerned are you about the impact of climate change in your community?				Aware of CPRG		
	Total	ABQ Metro	NW	North Central	Las Cruces/SW	Eastern	Urban	Rural	Frontier	Very concerned	Some-what concerned	Not very concerned	Not concerned at all	Yes	No	Unsure
Base	1229	471 38%	134 11%	260 21%	241 20%	123 10%	619 50%	396 32%	214 17%	742 60%	293 24%	93 8%	101 8%	270 22%	959 78%	0 0%
1 - Highest priority	393 32%	143 30%	38 28%	96 37%	78 32%	38 31%	203 33%	133 34%	57 27%	299 40%	67 23%	15 16%	12 12%	95 35%	298 31%	0 0%
2	229 19%	96 20%	29 22%	40 15%	47 20%	17 14%	130 21%	63 16%	36 17%	137 18%	67 23%	13 14%	12 12%	49 18%	180 19%	0 0%
3	248 20%	90 19%	31 23%	52 20%	52 22%	23 19%	111 18%	84 21%	53 25%	137 18%	74 25%	19 20%	18 18%	48 18%	200 21%	0 0%
4	171 14%	66 14%	18 13%	35 13%	31 13%	21 17%	86 14%	57 14%	28 13%	90 12%	55 19%	18 19%	8 8%	36 13%	135 14%	0 0%
5 - Least priority	188 15%	76 16%	18 13%	37 14%	33 14%	24 20%	89 14%	59 15%	40 19%	79 11%	30 10%	28 30%	51 50%	42 16%	146 15%	0 0%
Unsure	0 0%	0 0%	0 0%	0 0%	0 0%	0 0%	0 0%	0 0%	0 0%	0 0%	0 0%	0 0%	0 0%	0 0%	0 0%	0 0%

Please rank the above listed State priorities from 1-5 with 1 given highest priority and 5 least: **Community Mobility Program**

	Age							Gender			Race						Mode		
	Total	18-24	25-34	35-44	45-54	55-64	65+	Man	Wom- an	Non- binary/ other	Hispan- ic	White	Native	Black	Asian/ PI	Multi- racial	Other	Online	Phone
Base	1229	17 1%	96 8%	129 10%	142 12%	206 17%	639 52%	497 40%	730 59%	2 0%	606 49%	515 42%	64 5%	18 1%	11 1%	0 0%	0 0%	0 0%	1229 100%
1 - Highest priority	547 45%	8 47%	37 39%	54 42%	55 39%	87 42%	306 48%	195 39%	351 48%	1 50%	251 41%	252 49%	24 38%	7 39%	7 64%	0 0%	0 0%	0 0%	547 45%
2	198 16%	4 24%	18 19%	27 21%	26 18%	37 18%	86 13%	85 17%	113 15%	0 0%	100 17%	75 15%	11 17%	7 39%	1 9%	0 0%	0 0%	0 0%	198 16%
3	185 15%	0 0%	20 21%	19 15%	23 16%	28 14%	95 15%	82 16%	103 14%	0 0%	102 17%	64 12%	14 22%	1 6%	2 18%	0 0%	0 0%	0 0%	185 15%
4	115 9%	3 18%	11 11%	11 9%	17 12%	23 11%	50 8%	53 11%	62 8%	0 0%	63 10%	40 8%	9 14%	2 11%	0 0%	0 0%	0 0%	0 0%	115 9%
5 - Least priority	184 15%	2 12%	10 10%	18 14%	21 15%	31 15%	102 16%	82 16%	101 14%	1 50%	90 15%	84 16%	6 9%	1 6%	1 9%	0 0%	0 0%	0 0%	184 15%
Unsure	0 0%	0 0%	0 0%	0 0%	0 0%	0 0%	0 0%	0 0%	0 0%	0 0%	0 0%	0 0%	0 0%	0 0%	0 0%	0 0%	0 0%	0 0%	0 0%

Please rank the above listed State priorities from 1-5 with 1 given highest priority and 5 least: **Community Mobility Program**

	Region						County Type			How concerned are you about the impact of climate change in your community?				Aware of CPRG		
	Total	ABQ Metro	NW	North Central	Las Cruces/SW	Eastern	Urban	Rural	Frontier	Very concerned	Some-what concerned	Not very concerned	Not concerned at all	Yes	No	Unsure
Base	1229	471 38%	134 11%	260 21%	241 20%	123 10%	619 50%	396 32%	214 17%	742 60%	293 24%	93 8%	101 8%	270 22%	959 78%	0 0%
1 - Highest priority	547 45%	204 43%	60 45%	123 47%	107 44%	53 43%	287 46%	176 44%	84 39%	411 55%	96 33%	26 28%	14 14%	135 50%	412 43%	0 0%
2	198 16%	83 18%	22 16%	39 15%	39 16%	15 12%	115 19%	57 14%	26 12%	105 14%	71 24%	11 12%	11 11%	42 16%	156 16%	0 0%
3	185 15%	58 12%	25 19%	47 18%	40 17%	15 12%	73 12%	70 18%	42 20%	90 12%	60 20%	19 20%	16 16%	30 11%	155 16%	0 0%
4	115 9%	49 10%	12 9%	18 7%	19 8%	17 14%	52 8%	37 9%	26 12%	46 6%	40 14%	13 14%	16 16%	18 7%	97 10%	0 0%
5 - Least priority	184 15%	77 16%	15 11%	33 13%	36 15%	23 19%	92 15%	56 14%	36 17%	90 12%	26 9%	24 26%	44 44%	45 17%	139 14%	0 0%
Unsure	0 0%	0 0%	0 0%	0 0%	0 0%	0 0%	0 0%	0 0%	0 0%	0 0%	0 0%	0 0%	0 0%	0 0%	0 0%	0 0%

Please rank the above listed State priorities from 1-5 with 1 given highest priority and 5 least: **Implementation of NM methane waste rule and ozone precursor rule**

	Age							Gender			Race						Mode		
	Total	18-24	25-34	35-44	45-54	55-64	65+	Man	Woman	Non-binary/other	Hispanic	White	Native	Black	Asian/PI	Multi-racial	Other	Online	Phone
Base	1229	17 1%	96 8%	129 10%	142 12%	206 17%	639 52%	497 40%	730 59%	2 0%	606 49%	515 42%	64 5%	18 1%	11 1%	0 0%	0 0%	0 0%	1229 100%
1 - Highest priority	463 38%	5 29%	28 29%	37 29%	42 30%	78 38%	273 43%	169 34%	294 40%	0 0%	213 35%	212 41%	20 31%	7 39%	4 36%	0 0%	0 0%	0 0%	463 38%
2	204 17%	3 18%	16 17%	31 24%	19 13%	31 15%	104 16%	87 18%	117 16%	0 0%	103 17%	82 16%	13 20%	3 17%	2 18%	0 0%	0 0%	0 0%	204 17%
3	262 21%	2 12%	27 28%	33 26%	42 30%	38 18%	120 19%	104 21%	158 22%	0 0%	141 23%	96 19%	14 22%	4 22%	4 36%	0 0%	0 0%	0 0%	262 21%
4	127 10%	6 35%	16 17%	12 9%	17 12%	23 11%	53 8%	56 11%	70 10%	1 50%	63 10%	49 10%	10 16%	1 6%	0 0%	0 0%	0 0%	0 0%	127 10%
5 - Least priority	173 14%	1 6%	9 9%	16 12%	22 15%	36 17%	89 14%	81 16%	91 12%	1 50%	86 14%	76 15%	7 11%	3 17%	1 9%	0 0%	0 0%	0 0%	173 14%
Unsure	0 0%	0 0%	0 0%	0 0%	0 0%	0 0%	0 0%	0 0%	0 0%	0 0%	0 0%	0 0%	0 0%	0 0%	0 0%	0 0%	0 0%	0 0%	0 0%

Please rank the above listed State priorities from 1-5 with 1 given highest priority and 5 least: **Implementation of NM methane waste rule and ozone precursor rule**

	Region						County Type			How concerned are you about the impact of climate change in your community?				Aware of CPRG		
	Total	ABQ Metro	NW	North Central	Las Cruces/SW	Eastern	Urban	Rural	Frontier	Very concerned	Some-what concerned	Not very concerned	Not concerned at all	Yes	No	Unsure
Base	1229	471	134	260	241	123	619	396	214	742	293	93	101	270	959	0
		38%	11%	21%	20%	10%	50%	32%	17%	60%	24%	8%	8%	22%	78%	0%
1 - Highest priority	463	177	54	97	89	46	251	143	69	350	78	21	14	119	344	0
	38%	38%	40%	37%	37%	37%	41%	36%	32%	47%	27%	23%	14%	44%	36%	0%
2	204	83	23	45	41	12	107	67	30	117	65	13	9	44	160	0
	17%	18%	17%	17%	17%	10%	17%	17%	14%	16%	22%	14%	9%	16%	17%	0%
3	262	97	26	58	56	25	118	91	53	130	91	20	21	41	221	0
	21%	21%	19%	22%	23%	20%	19%	23%	25%	18%	31%	22%	21%	15%	23%	0%
4	127	47	19	22	21	18	60	41	26	65	38	12	12	25	102	0
	10%	10%	14%	8%	9%	15%	10%	10%	12%	9%	13%	13%	12%	9%	11%	0%
5 - Least priority	173	67	12	38	34	22	83	54	36	80	21	27	45	41	132	0
	14%	14%	9%	15%	14%	18%	13%	14%	17%	11%	7%	29%	45%	15%	14%	0%
Unsure	0	0	0	0	0	0	0	0	0	0	0	0	0	0	0	0
	0%	0%	0%	0%	0%	0%	0%	0%	0%	0%	0%	0%	0%	0%	0%	0%

Please rank the above listed State priorities from 1-5 with 1 given highest priority and 5 least: **Support access to energy efficiency, retrofit, and adoption of home electrification technologies and appliances (i.e. heat pumps) for low-income New Mexicans**

	Age							Gender			Race							Mode	
	Total	18-24	25-34	35-44	45-54	55-64	65+	Man	Woman	Non-binary/other	Hispanic	White	Native	Black	Asian/PI	Multi-racial	Other	Online	Phone
Base	1229	17 1%	96 8%	129 10%	142 12%	206 17%	639 52%	497 40%	730 59%	2 0%	606 49%	515 42%	64 5%	18 1%	11 1%	0 0%	0 0%	0 0%	1229 100%
1 - Highest priority	660 54%	10 59%	45 47%	70 54%	72 51%	113 55%	350 55%	229 46%	430 59%	1 50%	327 54%	280 54%	33 52%	6 33%	8 73%	0 0%	0 0%	0 0%	660 54%
2	190 15%	3 18%	24 25%	24 19%	19 13%	25 12%	95 15%	84 17%	106 15%	0 0%	93 15%	79 15%	10 16%	6 33%	0 0%	0 0%	0 0%	0 0%	190 15%
3	121 10%	2 12%	9 9%	10 8%	16 11%	20 10%	64 10%	68 14%	53 7%	0 0%	68 11%	43 8%	5 8%	1 6%	2 18%	0 0%	0 0%	0 0%	121 10%
4	85 7%	1 6%	6 6%	8 6%	17 12%	17 8%	36 6%	33 7%	52 7%	0 0%	37 6%	37 7%	7 11%	2 11%	0 0%	0 0%	0 0%	0 0%	85 7%
5 - Least priority	173 14%	1 6%	12 13%	17 13%	18 13%	31 15%	94 15%	83 17%	89 12%	1 50%	81 13%	76 15%	9 14%	3 17%	1 9%	0 0%	0 0%	0 0%	173 14%
Unsure	0 0%	0 0%	0 0%	0 0%	0 0%	0 0%	0 0%	0 0%	0 0%	0 0%	0 0%	0 0%	0 0%	0 0%	0 0%	0 0%	0 0%	0 0%	0 0%

Please rank the above listed State priorities from 1-5 with 1 given highest priority and 5 least: **Support access to energy efficiency, retrofit, and adoption of home electrification technologies and appliances (i.e. heat pumps) for low-income New Mexicans**

	Region						County Type			How concerned are you about the impact of climate change in your community?				Aware of CPRG		
	Total	ABQ Metro	NW	North Central	Las Cruces/SW	Eastern	Urban	Rural	Frontier	Very concerned	Some-what concerned	Not very concerned	Not concerned at all	Yes	No	Unsure
Base	1229	471 38%	134 11%	260 21%	241 20%	123 10%	619 50%	396 32%	214 17%	742 60%	293 24%	93 8%	101 8%	270 22%	959 78%	0 0%
1 - Highest priority	660 54%	247 52%	74 55%	146 56%	122 51%	71 58%	339 55%	216 55%	105 49%	465 63%	134 46%	38 41%	23 23%	152 56%	508 53%	0 0%
2	190 15%	82 17%	23 17%	35 13%	39 16%	11 9%	109 18%	53 13%	28 13%	98 13%	67 23%	11 12%	14 14%	44 16%	146 15%	0 0%
3	121 10%	41 9%	12 9%	28 11%	31 13%	9 7%	52 8%	44 11%	25 12%	53 7%	34 12%	18 19%	16 16%	26 10%	95 10%	0 0%
4	85 7%	33 7%	10 7%	14 5%	16 7%	12 10%	41 7%	23 6%	21 10%	33 4%	26 9%	13 14%	13 13%	16 6%	69 7%	0 0%
5 - Least priority	173 14%	68 14%	15 11%	37 14%	33 14%	20 16%	78 13%	60 15%	35 16%	93 13%	32 11%	13 14%	35 35%	32 12%	141 15%	0 0%
Unsure	0 0%	0 0%	0 0%	0 0%	0 0%	0 0%	0 0%	0 0%	0 0%	0 0%	0 0%	0 0%	0 0%	0 0%	0 0%	0 0%

Please rank the above listed State priorities from 1-5 with 1 given highest priority and 5 least: **Expand Community Energy Efficiency Development (CEED) Block Grant**

	Age							Gender			Race						Mode		
	Total	18-24	25-34	35-44	45-54	55-64	65+	Man	Woman	Non-binary/other	Hispanic	White	Native	Black	Asian/PI	Multi-racial	Other	Online	Phone
Base	1229	17 1%	96 8%	129 10%	142 12%	206 17%	639 52%	497 40%	730 59%	2 0%	606 49%	515 42%	64 5%	18 1%	11 1%	0 0%	0 0%	0 0%	1229 100%
1 - Highest priority	470 38%	5 29%	25 26%	44 34%	47 33%	83 40%	266 42%	170 34%	299 41%	1 50%	235 39%	199 39%	20 31%	8 44%	4 36%	0 0%	0 0%	0 0%	470 38%
2	248 20%	5 29%	21 22%	30 23%	29 20%	34 17%	129 20%	98 20%	150 21%	0 0%	117 19%	106 21%	16 25%	3 17%	3 27%	0 0%	0 0%	0 0%	248 20%
3	250 20%	4 24%	29 30%	32 25%	27 19%	33 16%	125 20%	110 22%	140 19%	0 0%	124 20%	105 20%	11 17%	3 17%	2 18%	0 0%	0 0%	0 0%	250 20%
4	120 10%	1 6%	9 9%	12 9%	20 14%	32 16%	46 7%	51 10%	68 9%	1 50%	55 9%	49 10%	10 16%	3 17%	1 9%	0 0%	0 0%	0 0%	120 10%
5 - Least priority	141 11%	2 12%	12 13%	11 9%	19 13%	24 12%	73 11%	68 14%	73 10%	0 0%	75 12%	56 11%	7 11%	1 6%	1 9%	0 0%	0 0%	0 0%	141 11%
Unsure	0 0%	0 0%	0 0%	0 0%	0 0%	0 0%	0 0%	0 0%	0 0%	0 0%	0 0%	0 0%	0 0%	0 0%	0 0%	0 0%	0 0%	0 0%	0 0%

Please rank the above listed State priorities from 1-5 with 1 given highest priority and 5 least: **Expand Community Energy Efficiency Development (CEED) Block Grant**

	Region						County Type			How concerned are you about the impact of climate change in your community?				Aware of CPRG		
	Total	ABQ Metro	NW	North Central	Las Cruces/SW	Eastern	Urban	Rural	Frontier	Very concerned	Some-what concerned	Not very concerned	Not concerned at all	Yes	No	Unsure
Base	1229	471	134	260	241	123	619	396	214	742	293	93	101	270	959	0
		38%	11%	21%	20%	10%	50%	32%	17%	60%	24%	8%	8%	22%	78%	0%
1 - Highest priority	470	174	53	110	84	49	242	156	72	337	89	27	17	113	357	0
	38%	37%	40%	42%	35%	40%	39%	39%	34%	45%	30%	29%	17%	42%	37%	0%
2	248	93	29	44	55	27	123	78	47	156	71	12	9	52	196	0
	20%	20%	22%	17%	23%	22%	20%	20%	22%	21%	24%	13%	9%	19%	20%	0%
3	250	101	23	47	61	18	128	74	48	123	78	26	23	53	197	0
	20%	21%	17%	18%	25%	15%	21%	19%	22%	17%	27%	28%	23%	20%	21%	0%
4	120	47	14	28	19	12	57	41	22	58	35	13	14	22	98	0
	10%	10%	10%	11%	8%	10%	9%	10%	10%	8%	12%	14%	14%	8%	10%	0%
5 - Least priority	141	56	15	31	22	17	69	47	25	68	20	15	38	30	111	0
	11%	12%	11%	12%	9%	14%	11%	12%	12%	9%	7%	16%	38%	11%	12%	0%
Unsure	0	0	0	0	0	0	0	0	0	0	0	0	0	0	0	0
	0%	0%	0%	0%	0%	0%	0%	0%	0%	0%	0%	0%	0%	0%	0%	0%

Please rank the above listed State priorities from 1-5 with 1 given highest priority and 5 least: **Energy Efficiency for Commercial Buildings**

	Age							Gender			Race						Mode		
	Total	18-24	25-34	35-44	45-54	55-64	65+	Man	Woman	Non-binary/other	Hispanic	White	Native	Black	Asian/PI	Multi-racial	Other	Online	Phone
Base	1229	17 1%	96 8%	129 10%	142 12%	206 17%	639 52%	497 40%	730 59%	2 0%	606 49%	515 42%	64 5%	18 1%	11 1%	0 0%	0 0%	0 0%	1229 100%
1 - Highest priority	423 34%	6 35%	23 24%	32 25%	43 30%	68 33%	251 39%	162 33%	261 36%	0 0%	216 36%	177 34%	17 27%	4 22%	3 27%	0 0%	0 0%	0 0%	423 34%
2	240 20%	3 18%	26 27%	27 21%	25 18%	39 19%	120 19%	100 20%	140 19%	0 0%	119 20%	101 20%	12 19%	5 28%	2 18%	0 0%	0 0%	0 0%	240 20%
3	251 20%	3 18%	23 24%	36 28%	32 23%	34 17%	123 19%	108 22%	143 20%	0 0%	126 21%	101 20%	17 27%	2 11%	3 27%	0 0%	0 0%	0 0%	251 20%
4	148 12%	4 24%	15 16%	15 12%	20 14%	34 17%	60 9%	46 9%	100 14%	2 100%	58 10%	65 13%	13 20%	6 33%	1 9%	0 0%	0 0%	0 0%	148 12%
5 - Least priority	160 13%	1 6%	8 8%	18 14%	20 14%	30 15%	83 13%	79 16%	81 11%	0 0%	85 14%	67 13%	5 8%	0 0%	2 18%	0 0%	0 0%	0 0%	160 13%
Unsure	7 1%	0 0%	1 1%	1 1%	2 1%	1 0%	2 0%	2 0%	5 1%	0 0%	2 0%	4 1%	0 0%	1 6%	0 0%	0 0%	0 0%	0 0%	7 1%

Please rank the above listed State priorities from 1-5 with 1 given highest priority and 5 least: **Energy Efficiency for Commercial Buildings**

	Region						County Type			How concerned are you about the impact of climate change in your community?				Aware of CPRG		
	Total	ABQ Metro	NW	North Central	Las Cruces/SW	Eastern	Urban	Rural	Frontier	Very concerned	Some-what concerned	Not very concerned	Not concerned at all	Yes	No	Unsure
Base	1229	471 38%	134 11%	260 21%	241 20%	123 10%	619 50%	396 32%	214 17%	742 60%	293 24%	93 8%	101 8%	270 22%	959 78%	0 0%
1 - Highest priority	423 34%	157 33%	45 34%	102 39%	75 31%	44 36%	222 36%	138 35%	63 29%	311 42%	71 24%	24 26%	17 17%	106 39%	317 33%	0 0%
2	240 20%	87 18%	31 23%	48 18%	53 22%	21 17%	125 20%	74 19%	41 19%	141 19%	75 26%	13 14%	11 11%	58 21%	182 19%	0 0%
3	251 20%	102 22%	30 22%	38 15%	61 25%	20 16%	121 20%	81 20%	49 23%	127 17%	74 25%	28 30%	22 22%	43 16%	208 22%	0 0%
4	148 12%	59 13%	14 10%	33 13%	21 9%	21 17%	70 11%	52 13%	26 12%	76 10%	49 17%	11 12%	12 12%	24 9%	124 13%	0 0%
5 - Least priority	160 13%	63 13%	14 10%	38 15%	30 12%	15 12%	80 13%	47 12%	33 15%	84 11%	21 7%	17 18%	38 38%	39 14%	121 13%	0 0%
Unsure	7 1%	3 1%	0 0%	1 0%	1 0%	2 2%	1 0%	4 1%	2 1%	3 0%	3 1%	0 0%	1 1%	0 0%	7 1%	0 0%

What challenges are affecting your community the most due to climate change?

	Age							Gender			Race						Mode		
	Total	18-24	25-34	35-44	45-54	55-64	65+	Man	Woman	Non-binary/other	Hispanic	White	Native	Black	Asian/PI	Multi-racial	Other	Online	Phone
Base	1641	97 6%	144 9%	176 11%	176 11%	266 16%	777 47%	639 39%	981 60%	16 1%	672 41%	745 45%	123 7%	25 2%	18 1%	19 1%	10 1%	425 26%	1216 74%
Extreme weather events (e.g. wildfires, heatwaves)	855 52%	51 53%	74 51%	94 53%	81 46%	152 57%	401 52%	301 47%	540 55%	12 75%	313 47%	427 57%	65 53%	14 56%	8 44%	11 58%	4 40%	296 70%	559 46%
Air quality and pollution	871 53%	54 56%	75 52%	99 56%	87 49%	145 55%	410 53%	294 46%	566 58%	10 63%	324 48%	423 57%	66 54%	15 60%	11 61%	14 74%	5 50%	256 60%	615 51%
Water quality and availability	566 34%	51 53%	51 35%	67 38%	44 25%	95 36%	257 33%	199 31%	353 36%	13 81%	169 25%	295 40%	58 47%	4 16%	9 50%	12 63%	5 50%	303 71%	263 22%
Flooding	455 28%	20 21%	29 20%	50 28%	38 22%	84 32%	233 30%	165 26%	284 29%	5 31%	177 26%	218 29%	40 33%	4 16%	6 33%	2 11%	0 0%	71 17%	384 32%
Loss of biodiversity	520 32%	39 40%	47 33%	51 29%	44 25%	92 35%	246 32%	162 25%	344 35%	13 81%	160 24%	277 37%	49 40%	4 16%	5 28%	13 68%	4 40%	226 53%	294 24%
Forced displacement	543 33%	26 27%	49 34%	65 37%	55 31%	94 35%	254 33%	179 28%	354 36%	10 63%	241 36%	237 32%	37 30%	4 16%	8 44%	8 42%	2 20%	99 23%	444 37%
Loss of agricultural land and crops	543 33%	39 40%	43 30%	62 35%	53 30%	93 35%	252 32%	178 28%	356 36%	8 50%	185 28%	265 36%	61 50%	4 16%	7 39%	11 58%	5 50%	179 42%	364 30%
Loss of livelihoods	522 32%	29 30%	42 29%	54 31%	45 26%	84 32%	267 34%	180 28%	332 34%	9 56%	194 29%	260 35%	39 32%	6 24%	9 50%	5 26%	2 20%	126 30%	396 33%
Public costs for disaster relief from wildfires, etc.	540 33%	24 25%	42 29%	62 35%	50 28%	98 37%	263 34%	189 30%	343 35%	7 44%	192 29%	278 37%	42 34%	5 20%	5 28%	8 42%	3 30%	157 37%	383 31%

What challenges are affecting your community the most due to climate change? (continued)

	Age							Gender			Race						Mode		
	Total	18-24	25-34	35-44	45-54	55-64	65+	Man	Wom- an	Non- binary/ other	Hispan- ic	White	Native	Black	Asian/ PI	Multi- racial	Other	Online	Phone
Base	1641	97 6%	144 9%	176 11%	176 11%	266 16%	777 47%	639 39%	981 60%	16 1%	672 41%	745 45%	123 7%	25 2%	18 1%	19 1%	10 1%	425 26%	1216 74%
Threat to cultural or sacred sites	268 16%	49 51%	33 23%	23 13%	24 14%	37 14%	101 13%	98 15%	157 16%	12 75%	71 11%	129 17%	41 33%	2 8%	5 28%	10 53%	5 50%	201 47%	67 6%
Other	81 5%	3 3%	11 8%	4 2%	6 3%	11 4%	46 6%	29 5%	51 5%	1 6%	16 2%	46 6%	2 2%	4 16%	2 11%	5 26%	6 60%	65 15%	16 1%
Unsure	215 13%	9 9%	13 9%	17 10%	26 15%	42 16%	105 14%	88 14%	124 13%	0 0%	93 14%	99 13%	11 9%	3 12%	4 22%	1 5%	0 0%	22 5%	193 16%

What challenges are affecting your community the most due to climate change?

	Region						County Type			How concerned are you about the impact of climate change in your community?				Aware of CPRG		
	Total	ABQ Metro	NW	North Central	Las Cruces/SW	Eastern	Urban	Rural	Frontier	Very concerned	Some-what concerned	Not very concerned	Not concerned at all	Yes	No	Unsure
Base	1641	632	189	397	267	138	885	488	250	1099	331	99	105	479	1073	89
		39%	12%	24%	16%	8%	54%	30%	15%	67%	20%	6%	6%	29%	65%	5%
Extreme weather events (e.g. wildfires, heatwaves)	855	328	91	236	124	66	480	239	126	674	137	27	15	297	501	57
	52%	52%	48%	59%	46%	48%	54%	49%	50%	61%	41%	27%	14%	62%	47%	64%
Air quality and pollution	871	338	97	221	138	68	498	240	124	650	158	39	23	286	537	48
	53%	53%	51%	56%	52%	49%	56%	49%	50%	59%	48%	39%	22%	60%	50%	54%
Water quality and availability	566	208	74	167	72	34	322	161	72	454	84	13	12	208	297	61
	34%	33%	39%	42%	27%	25%	36%	33%	29%	41%	25%	13%	11%	43%	28%	69%
Flooding	455	167	57	120	71	35	240	138	72	335	84	20	16	124	318	13
	28%	26%	30%	30%	27%	25%	27%	28%	29%	30%	25%	20%	15%	26%	30%	15%
Loss of biodiversity	520	209	53	154	61	35	308	135	69	430	69	12	9	188	292	40
	32%	33%	28%	39%	23%	25%	35%	28%	28%	39%	21%	12%	9%	39%	27%	45%
Forced displacement	543	218	59	128	91	44	305	165	70	395	106	25	17	151	374	18
	33%	34%	31%	32%	34%	32%	34%	34%	28%	36%	32%	25%	16%	32%	35%	20%
Loss of agricultural land and crops	543	217	64	138	75	45	290	163	86	407	102	24	10	168	333	42
	33%	34%	34%	35%	28%	33%	33%	33%	34%	37%	31%	24%	10%	35%	31%	47%
Loss of livelihoods	522	204	57	144	67	45	271	163	83	389	105	13	14	150	347	25
	32%	32%	30%	36%	25%	33%	31%	33%	33%	35%	32%	13%	13%	31%	32%	28%

What challenges are affecting your community the most due to climate change? (continued)

	Region						County Type			How concerned are you about the impact of climate change in your community?				Aware of CPRG		
	Total	ABQ Metro	NW	North Central	Las Cruces/SW	Eastern	Urban	Rural	Frontier	Very concerned	Some-what concerned	Not very concerned	Not concerned at all	Yes	No	Unsure
Base	1641	632 39%	189 12%	397 24%	267 16%	138 8%	885 54%	488 30%	250 15%	1099 67%	331 20%	99 6%	105 6%	479 29%	1073 65%	89 5%
Public costs for disaster relief from wildfires, etc.	540 33%	212 34%	64 34%	160 40%	68 25%	31 22%	310 35%	154 32%	71 28%	424 39%	94 28%	13 13%	9 9%	177 37%	334 31%	29 33%
Threat to cultural or sacred sites	268 16%	106 17%	43 23%	84 21%	22 8%	8 6%	160 18%	70 14%	33 13%	205 19%	23 7%	16 16%	24 23%	121 25%	101 9%	46 52%
Other	81 5%	45 7%	5 3%	17 4%	9 3%	3 2%	55 6%	18 4%	6 2%	68 6%	4 1%	3 3%	5 5%	31 6%	38 4%	12 13%
Unsure	215 13%	77 12%	27 14%	43 11%	39 15%	25 18%	99 11%	73 15%	39 16%	126 11%	53 16%	12 12%	20 19%	44 9%	161 15%	10 11%

Which of the following would you like to see implemented in your community as part of the Climate Action Plan?

	Age							Gender			Race						Mode		
	Total	18-24	25-34	35-44	45-54	55-64	65+	Man	Wom- an	Non- binary/ other	Hispan- ic	White	Native	Black	Asian/ PI	Multi- racial	Other	Online	Phone
Base	1647	97 6%	145 9%	178 11%	176 11%	266 16%	780 47%	641 39%	985 60%	16 1%	675 41%	747 45%	123 7%	25 2%	19 1%	19 1%	10 1%	425 26%	1222 74%
Renewable energy projects (e.g. solar panels, wind turbines)	1027 62%	70 72%	94 65%	114 64%	105 60%	161 61%	482 62%	382 60%	630 64%	14 88%	375 56%	501 67%	84 68%	15 60%	13 68%	15 79%	8 80%	337 79%	690 56%
Programs to support energy efficiency and electrification in buildings	862 52%	51 53%	69 48%	88 49%	97 55%	142 53%	414 53%	319 50%	533 54%	9 56%	307 45%	441 59%	61 50%	11 44%	9 47%	13 68%	6 60%	274 64%	588 48%
Public transportation improvements	810 49%	54 56%	77 53%	98 55%	80 45%	132 50%	368 47%	284 44%	512 52%	13 81%	283 42%	411 55%	56 46%	10 40%	13 68%	16 84%	6 60%	285 67%	525 43%
Green spaces and urban forestry	915 56%	50 52%	74 51%	110 62%	104 59%	154 58%	422 54%	316 49%	590 60%	8 50%	341 51%	447 60%	68 55%	8 32%	13 68%	17 89%	6 60%	269 63%	646 53%
Waste reduction, composting, and recycling programs	891 54%	61 63%	68 47%	91 51%	96 55%	149 56%	425 54%	309 48%	573 58%	8 50%	312 46%	447 60%	78 63%	9 36%	13 68%	16 84%	4 40%	310 73%	581 48%
Green jobs training/trade programs	858 52%	49 51%	77 53%	96 54%	85 48%	140 53%	410 53%	301 47%	549 56%	7 44%	311 46%	420 56%	70 57%	10 40%	10 53%	16 84%	7 70%	276 65%	582 48%
Environmental education	808 49%	59 61%	68 47%	90 51%	84 48%	124 47%	382 49%	287 45%	511 52%	9 56%	283 42%	397 53%	79 64%	9 36%	10 53%	11 58%	6 60%	275 65%	533 44%

Which of the following would you like to see implemented in your community as part of the Climate Action Plan? (continued)

	Age							Gender			Race						Mode		
	Total	18-24	25-34	35-44	45-54	55-64	65+	Man	Woman	Non-binary/other	Hispanic	White	Native	Black	Asian/PI	Multi-racial	Other	Online	Phone
Base	1647	97	145	178	176	266	780	641	985	16	675	747	123	25	19	19	10	425	1222
		6%	9%	11%	11%	16%	47%	39%	60%	1%	41%	45%	7%	2%	1%	1%	1%	26%	74%
Cleanup and ecological remediation	796	58	61	89	84	137	365	286	495	13	279	398	68	8	8	15	4	257	539
	48%	60%	42%	50%	48%	52%	47%	45%	50%	81%	41%	53%	55%	32%	42%	79%	40%	60%	44%
Sustainable agriculture and land stewardship	759	52	56	74	76	122	378	267	479	12	260	400	54	6	10	15	4	263	496
	46%	54%	39%	42%	43%	46%	48%	42%	49%	75%	39%	54%	44%	24%	53%	79%	40%	62%	41%
Transition planning to phase out fossil fuels and replace alternative income	313	42	31	38	26	46	128	106	194	11	59	189	26	4	7	15	4	272	41
	19%	43%	21%	21%	15%	17%	16%	17%	20%	69%	9%	25%	21%	16%	37%	79%	40%	64%	3%
Incentives for electric vehicles	598	24	40	68	63	97	305	221	367	9	196	327	34	7	9	13	4	214	384
	36%	25%	28%	38%	36%	36%	39%	34%	37%	56%	29%	44%	28%	28%	47%	68%	40%	50%	31%
Climate education and awareness campaigns	730	54	56	75	67	115	362	265	455	9	247	371	63	10	13	12	6	268	462
	44%	56%	39%	42%	38%	43%	46%	41%	46%	56%	37%	50%	51%	40%	68%	63%	60%	63%	38%
Other	108	7	12	9	10	17	53	40	65	3	26	60	5	3	3	5	6	80	28
	7%	7%	8%	5%	6%	6%	7%	6%	7%	19%	4%	8%	4%	12%	16%	26%	60%	19%	2%
Unsure	151	4	6	18	21	32	68	68	81	0	71	67	7	2	2	0	0	5	146
	9%	4%	4%	10%	12%	12%	9%	11%	8%	0%	11%	9%	6%	8%	11%	0%	0%	1%	12%

Which of the following would you like to see implemented in your community as part of the Climate Action Plan?

	Region						County Type			How concerned are you about the impact of climate change in your community?				Aware of CPRG		
	Total	ABQ Metro	NW	North Central	Las Cruces/SW	Eastern	Urban	Rural	Frontier	Very concerned	Some-what concerned	Not very concerned	Not concerned at all	Yes	No	Unsure
Base	1647	633	191	400	267	138	888	490	251	1104	332	99	105	481	1077	89
		38%	12%	24%	16%	8%	54%	30%	15%	67%	20%	6%	6%	29%	65%	5%
Renewable energy projects (e.g. solar panels, wind turbines)	1027	386	126	276	149	82	571	299	149	778	179	43	26	323	632	72
	62%	61%	66%	69%	56%	59%	64%	61%	59%	70%	54%	43%	25%	67%	59%	81%
Programs to support energy efficiency and electrification in buildings	862	326	100	235	124	70	478	249	128	641	159	32	29	274	535	53
	52%	52%	52%	59%	46%	51%	54%	51%	51%	58%	48%	32%	28%	57%	50%	60%
Public transportation improvements	810	322	94	209	113	64	477	218	107	622	137	28	22	274	485	51
	49%	51%	49%	52%	42%	46%	54%	44%	43%	56%	41%	28%	21%	57%	45%	57%
Green spaces and urban forestry	915	364	110	228	131	75	511	270	127	677	171	33	32	284	583	48
	56%	58%	58%	57%	49%	54%	58%	55%	51%	61%	52%	33%	30%	59%	54%	54%
Waste reduction, composting, and recycling programs	891	329	124	238	124	67	477	273	132	677	160	29	22	295	533	63
	54%	52%	65%	60%	46%	49%	54%	56%	53%	61%	48%	29%	21%	61%	49%	71%
Green jobs training/trade programs	858	328	106	220	130	67	472	254	125	664	143	30	21	279	527	52
	52%	52%	55%	55%	49%	49%	53%	52%	50%	60%	43%	30%	20%	58%	49%	58%

Which of the following would you like to see implemented in your community as part of the Climate Action Plan? (continued)

	Region						County Type			How concerned are you about the impact of climate change in your community?				Aware of CPRG		
	Total	ABQ Metro	NW	North Central	Las Cruces/SW	Eastern	Urban	Rural	Frontier	Very concerned	Some-what concerned	Not very concerned	Not concerned at all	Yes	No	Unsure
Base	1647	633 38%	191 12%	400 24%	267 16%	138 8%	888 54%	490 30%	251 15%	1104 67%	332 20%	99 6%	105 6%	481 29%	1077 65%	89 5%
Environmental education	808 49%	302 48%	119 62%	209 52%	106 40%	63 46%	431 49%	246 50%	122 49%	610 55%	147 44%	29 29%	19 18%	264 55%	486 45%	58 65%
Cleanup and ecological remediation	796 48%	295 47%	104 54%	219 55%	105 39%	64 46%	438 49%	239 49%	110 44%	602 55%	142 43%	33 33%	18 17%	247 51%	494 46%	55 62%
Sustainable agriculture and land stewardship	759 46%	299 47%	93 49%	202 51%	98 37%	58 42%	429 48%	221 45%	100 40%	606 55%	127 38%	17 17%	8 8%	253 53%	457 42%	49 55%
Transition planning to phase out fossil fuels and replace alternative income	313 19%	124 20%	37 19%	109 27%	24 9%	10 7%	215 24%	64 13%	25 10%	281 25%	13 4%	7 7%	12 11%	167 35%	95 9%	51 57%
Incentives for electric vehicles	598 36%	224 35%	76 40%	162 41%	87 33%	41 30%	342 39%	172 35%	76 30%	482 44%	98 30%	13 13%	4 4%	202 42%	358 33%	38 43%
Climate education and awareness campaigns	730 44%	272 43%	103 54%	187 47%	106 40%	53 38%	399 45%	211 43%	111 44%	570 52%	129 39%	19 19%	10 10%	233 48%	444 41%	53 60%

Which of the following would you like to see implemented in your community as part of the Climate Action Plan? (continued)

	Region						County Type			How concerned are you about the impact of climate change in your community?				Aware of CPRG		
	Total	ABQ Metro	NW	North Central	Las Cruces/SW	Eastern	Urban	Rural	Frontier	Very concerned	Some-what concerned	Not very concerned	Not concerned at all	Yes	No	Unsure
Base	1647	633 38%	191 12%	400 24%	267 16%	138 8%	888 54%	490 30%	251 15%	1104 67%	332 20%	99 6%	105 6%	481 29%	1077 65%	89 5%
Other	108 7%	50 8%	8 4%	29 7%	12 4%	6 4%	68 8%	26 5%	11 4%	91 8%	9 3%	2 2%	5 5%	48 10%	45 4%	15 17%
Unsure	151 9%	54 9%	16 8%	37 9%	26 10%	16 12%	67 8%	56 11%	26 10%	90 8%	32 10%	9 9%	17 16%	27 6%	120 11%	4 4%